

Hsp75 Antibody
Rabbit mAb
Catalog # AP90959

Specification

Hsp75 Antibody - Product Information

| | |
|--------------------------------|------------------------|
| Application | WB, IP |
| Primary Accession | Q12931 |
| Clonality | Monoclonal |
| Other Names | |
| HSP75; HSP 75; HSP90L; TRAP-1; | |
| Isotype | Rabbit IgG |
| Host | Rabbit |
| Calculated MW | 80110 Da |

Hsp75 Antibody - Additional Information

| | |
|------------------------------|---|
| Dilution | WB~~1:1000 IP~~N/A |
| Purification | Affinity-chromatography |
| Immunogen | A synthesized peptide derived from human Hsp75 |
| Description | TNF receptor-associated protein 1 (TRAP1), also known as HSP75, is a mitochondrial chaperone and ATPase that was originally identified as a protein that interacts with the TNF receptor. |
| Storage Condition and Buffer | Rabbit IgG in phosphate buffered saline , pH 7.4, 150mM NaCl, 0.02% sodium azide and 50% glycerol. Store at +4°C short term. Store at -20°C long term. Avoid freeze / thaw cycle. |

Hsp75 Antibody - Protein Information

Name TRAP1

Synonyms HSP75, HSPC5 {ECO:0000303|PubMed:1866360}

Function

Chaperone that expresses an ATPase activity. Involved in maintaining mitochondrial function and polarization, downstream of PINK1 and mitochondrial complex I. Is a negative regulator of mitochondrial respiration able to modulate the balance between oxidative phosphorylation and aerobic glycolysis. The impact of TRAP1 on mitochondrial respiration is probably mediated by modulation of mitochondrial SRC and inhibition of SDHA.

Cellular Location

Mitochondrion. Mitochondrion inner membrane Mitochondrion matrix

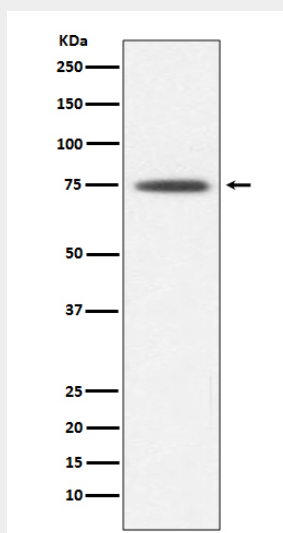
Tissue Location

Found in skeletal muscle, liver, heart, brain, kidney, pancreas, lung, placenta and bladder. Expression is highly reduced in bladder cancer and renal cell carcinoma specimens compared to healthy tissues, but it is increased in other type of tumors

Hsp75 Antibody - Protocols

Provided below are standard protocols that you may find useful for product applications.

- [Western Blot](#)
- [Blocking Peptides](#)
- [Dot Blot](#)
- [Immunohistochemistry](#)
- [Immunofluorescence](#)
- [Immunoprecipitation](#)
- [Flow Cytometry](#)
- [Cell Culture](#)

Hsp75 Antibody - Images

Western blot analysis of Hsp75 expression in K562 cell lysate.