

**Cdc37 Antibody**  
Rabbit mAb  
Catalog # AP90966

## Specification

---

### Cdc37 Antibody - Product Information

|   |                        |
|---|------------------------|
| Application   | WB, IHC, FC, IP        |
| Primary Accession   | <a href="#">Q16543</a> |
| Reactivity  | Rat                    |
| Clonality   | Monoclonal             |
| <b>Other Names</b>  |                        |
| CC37; Hsp90 chaperone protein kinase-targeting subunit; Hsp90 co-chaperone Cdc37; p50Cdc37; |                        |
| Isotype   | Rabbit IgG             |
| Host  | Rabbit                 |
| Calculated MW   | 44468 Da               |

### Cdc37 Antibody - Additional Information

|                              |  |
|------------------------------|--|
| Dilution                     | WB~~1:1000<br>IHC~~1:100~500<br>FC~~1:10~50<br>IP~~N/A   |
| Purification                 | Affinity-chromatography  |
| Immunogen                    | A synthesized peptide derived from human Cdc37   |
| Description                  | CDC37 is an important component of the HSP90 chaperone complex. It was initially identified for its involvement in cell-cycle progression and was later found to have a much broader role as a chaperone for a wide variety of kinases and other proteins. CDC37 protein has an amino-terminal kinase binding domain followed by a central HSP90 binding domain. |
| Storage Condition and Buffer | Rabbit IgG in phosphate buffered saline , pH 7.4, 150mM NaCl, 0.02% sodium azide and 50% glycerol. Store at +4°C short term. Store at -20°C long term. Avoid freeze / thaw cycle.  |

### Cdc37 Antibody - Protein Information

**Name** CDC37

**Synonyms** CDC37A

#### **Function**

Co-chaperone that binds to numerous kinases and promotes their interaction with the Hsp90

complex, resulting in stabilization and promotion of their activity (PubMed:<a href="http://www.uniprot.org/citations/8666233" target="\_blank">8666233</a>). Inhibits HSP90AA1 ATPase activity (PubMed:<a href="http://www.uniprot.org/citations/23569206" target="\_blank">23569206</a>).

#### Cellular Location

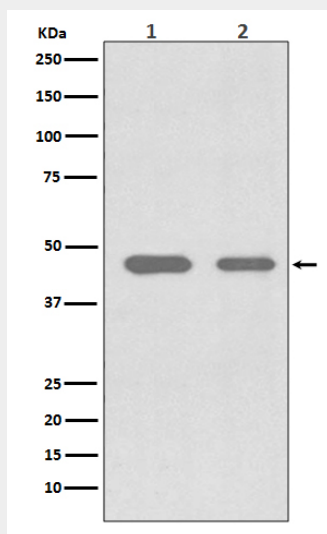
Cytoplasm.

#### Cdc37 Antibody - Protocols

Provided below are standard protocols that you may find useful for product applications.

- [Western Blot](#)
- [Blocking Peptides](#)
- [Dot Blot](#)
- [Immunohistochemistry](#)
- [Immunofluorescence](#)
- [Immunoprecipitation](#)
- [Flow Cytometry](#)
- [Cell Culture](#)

#### Cdc37 Antibody - Images



Western blot analysis of Cdc37 expression in (1) Jurkat cell lysate; (2) SW480 cell lysate.