

JNK1/JNK3 Antibody
Rabbit mAb
Catalog # AP90968**Specification**

JNK1/JNK3 Antibody - Product Information

Application	WB, IP
Primary Accession	P45983/P53779
Reactivity	Rat
Clonality	Monoclonal
Other Names	
c-Jun N-terminal kinase 3; FLJ12099; FLJ33785; JNK1; JNK3; JNK3 alpha protein kinase; JNK3A; MAP kinase 10; MAP kinase p49 3F12; MAPK 10; MAPK10;	
Isotype	Rabbit IgG
Host	Rabbit
Calculated MW	46,54kDa KDa

JNK1/JNK3 Antibody - Additional Information

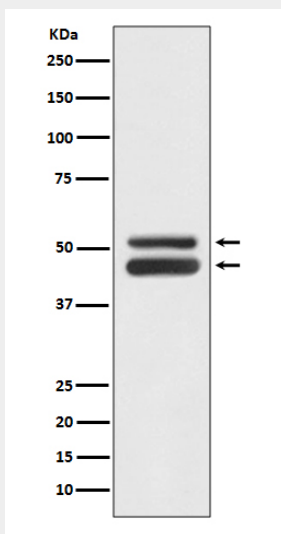
Dilution	WB~~1:1000 IP~~N/A
Purification	Affinity-chromatography
Immunogen	A synthesized peptide derived from human JNK1/JNK3
Description	The stress-activated protein kinase/Jun-amino-terminal kinase SAPK/JNK is potently and preferentially activated by a variety of environmental stresses including UV and gamma radiation, ceramides, inflammatory cytokines, and in some instances, by growth factors and GPCR agonists. As with the other MAPKs, the core signaling unit is composed of a MAPKKK, typically MEKK1-MEKK4, or by one of the mixed lineage kinases (MLKs), which phosphorylate and activate MKK4/7.
Storage Condition and Buffer	Rabbit IgG in phosphate buffered saline , pH 7.4, 150mM NaCl, 0.02% sodium azide and 50% glycerol. Store at +4°C short term. Store at -20°C long term. Avoid freeze / thaw cycle.

JNK1/JNK3 Antibody - Protein Information**JNK1/JNK3 Antibody - Protocols**

Provided below are standard protocols that you may find useful for product applications.

- [Western Blot](#)
- [Blocking Peptides](#)
- [Dot Blot](#)
- [Immunohistochemistry](#)
- [Immunofluorescence](#)
- [Immunoprecipitation](#)
- [Flow Cytometry](#)
- [Cell Culture](#)

JNK1/JNK3 Antibody - Images



Western blot analysis of JNK1/JNK3 expression in HeLa cell lysate.