

IGF2 Antibody
Rabbit mAb
Catalog # AP91012**Specification**

IGF2 Antibody - Product Information

Application	WB, ICC
Primary Accession	P01344
Clonality	Monoclonal
Other Names	
C11orf43; IGF 2; IGF II; IGF2; INSIGF; Somatomedin A;	
Isotype	Rabbit IgG
Host	Rabbit
Calculated MW	20140 Da

IGF2 Antibody - Additional Information

Dilution	WB~~1:1000 ICC~~N/A
Purification	Affinity-chromatography
Immunogen	A synthesized peptide derived from human IGF2
Description	The insulin-like growth factors possess growth-promoting activity. In vitro, they are potent mitogens for cultured cells. IGF-II is influenced by placental lactogen and may play a role in fetal development.;Preptin undergoes glucose-mediated co-secretion with insulin, and acts as physiological amplifier of glucose-mediated insulin secretion.
Storage Condition and Buffer	Rabbit IgG in phosphate buffered saline , pH 7.4, 150mM NaCl, 0.02% sodium azide and 50% glycerol. Store at +4°C short term. Store at -20°C long term. Avoid freeze / thaw cycle.

IGF2 Antibody - Protein Information**Name** IGF2 ([HGNC:5466](#))**Function**

The insulin-like growth factors possess growth-promoting activity (By similarity). Major fetal growth hormone in mammals. Plays a key role in regulating fetoplacental development. IGF2 is influenced by placental lactogen. Also involved in tissue differentiation. In adults, involved in glucose metabolism in adipose tissue, skeletal muscle and liver (Probable). Acts as a ligand for integrin which is required for IGF2 signaling (PubMed:28873464). Positively regulates myogenic transcription factor MYOD1

function by facilitating the recruitment of transcriptional coactivators, thereby controlling muscle terminal differentiation (By similarity). Inhibits myoblast differentiation and modulates metabolism via increasing the mitochondrial respiration rate (By similarity).

Cellular Location

Secreted.

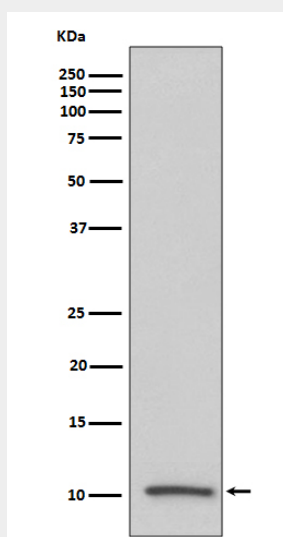
Tissue Location

Expressed in heart, placenta, lung, liver, muscle, kidney, tongue, limb, eye and pancreas.

IGF2 Antibody - Protocols

Provided below are standard protocols that you may find useful for product applications.

- [Western Blot](#)
- [Blocking Peptides](#)
- [Dot Blot](#)
- [Immunohistochemistry](#)
- [Immunofluorescence](#)
- [Immunoprecipitation](#)
- [Flow Cytometry](#)
- [Cell Culture](#)

IGF2 Antibody - Images

Western blot analysis of IGF2 expression in human serum lysate.