

**VWF Antibody**  
Rabbit mAb  
Catalog # AP91023

## Specification

---

### VWF Antibody - Product Information

Application	<b>WB, IHC</b>
Primary Accession	<a href="#">P04275</a>
Clonality	<b>Monoclonal</b>
<b>Other Names</b>	
VWF; von Willebrand factor; von Willebrand antigen II; F8VWF;	
Isotype	<b>Rabbit IgG</b>
Host	<b>Rabbit</b>
Calculated MW	<b>309265 Da</b>

### VWF Antibody - Additional Information

Purification	<b>Affinity-chromatography</b>
Immunogen	<b>A synthesized peptide derived from human VWF</b>
Description	<b>VWF is important in hemostasis, and genetic defects in the structure and modification of VWF can cause von Willebrand disease (VWD), the most common congenital bleeding disorder in humans.</b>
Storage Condition and Buffer	<b>Rabbit IgG in phosphate buffered saline , pH 7.4, 150mM NaCl, 0.02% sodium azide and 50% glycerol. Store at +4°C short term. Store at -20°C long term. Avoid freeze / thaw cycle.</b>

### VWF Antibody - Protein Information

**Name** VWF

**Synonyms** F8VWF

#### Function

Important in the maintenance of hemostasis, it promotes adhesion of platelets to the sites of vascular injury by forming a molecular bridge between sub-endothelial collagen matrix and platelet- surface receptor complex GPIb-IX-V. Also acts as a chaperone for coagulation factor VIII, delivering it to the site of injury, stabilizing its heterodimeric structure and protecting it from premature clearance from plasma.

#### Cellular Location

Secreted. Secreted, extracellular space, extracellular matrix. Note=Localized to storage granules

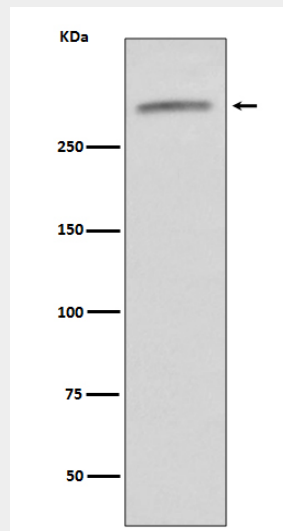
**Tissue Location**

Plasma.

**VWF Antibody - Protocols**

Provided below are standard protocols that you may find useful for product applications.

- [Western Blot](#)
- [Blocking Peptides](#)
- [Dot Blot](#)
- [Immunohistochemistry](#)
- [Immunofluorescence](#)
- [Immunoprecipitation](#)
- [Flow Cytometry](#)
- [Cell Culture](#)

**VWF Antibody - Images**

Western blot analysis of VWF expression in human serum lysate.