

Fas Antibody
Rabbit mAb
Catalog # AP91031

Specification

Fas Antibody - Product Information

Application **WB, IHC, FC, ICC**
Primary Accession [P25445](#)
Clonality **Monoclonal**
Other Names
FAS; ALPS1A; APO-1; APT1; CD95; FAS1; FASTM; TNFRSF6;

Isotype **Rabbit IgG**
Host **Rabbit**
Calculated MW **37732 Da**

Fas Antibody - Additional Information

Dilution **WB~~1:1000**
IHC~~1:100~500
FC~~1:10~50
ICC~~N/A

Purification **Affinity-chromatography**
Immunogen **A synthesized peptide derived from human Fas**

Description **Receptor for TNFSF6/FASLG. The adapter molecule FADD recruits caspase-8 to the activated receptor. The resulting death-inducing signaling complex (DISC) performs caspase-8 proteolytic activation which initiates the subsequent cascade of caspases (aspartate-specific cysteine proteases) mediating apoptosis.**

Storage Condition and Buffer **Rabbit IgG in phosphate buffered saline , pH 7.4, 150mM NaCl, 0.02% sodium azide and 50% glycerol. Store at +4°C short term. Store at -20°C long term. Avoid freeze / thaw cycle.**

Fas Antibody - Protein Information

Name FAS

Synonyms APT1, FAS1, TNFRSF6

Function

Receptor for TNFSF6/FASLG. The adapter molecule FADD recruits caspase CASP8 to the activated receptor. The resulting death-inducing signaling complex (DISC) performs CASP8 proteolytic activation which initiates the subsequent cascade of caspases (aspartate-specific cysteine

proteases) mediating apoptosis. FAS-mediated apoptosis may have a role in the induction of peripheral tolerance, in the antigen- stimulated suicide of mature T-cells, or both. The secreted isoforms 2 to 6 block apoptosis (in vitro).

Cellular Location

[Isoform 1]: Cell membrane; Single-pass type I membrane protein. Membrane raft [Isoform 3]: Secreted. [Isoform 5]: Secreted.

Tissue Location

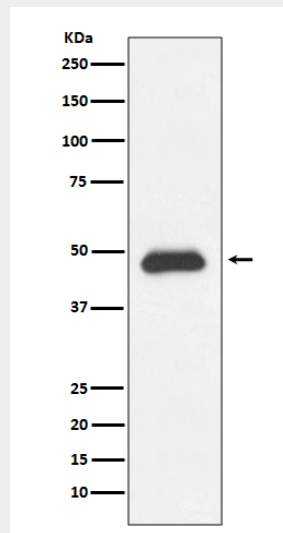
Isoform 1 and isoform 6 are expressed at equal levels in resting peripheral blood mononuclear cells. After activation there is an increase in isoform 1 and decrease in the levels of isoform 6.

Fas Antibody - Protocols

Provided below are standard protocols that you may find useful for product applications.

- [Western Blot](#)
- [Blocking Peptides](#)
- [Dot Blot](#)
- [Immunohistochemistry](#)
- [Immunofluorescence](#)
- [Immunoprecipitation](#)
- [Flow Cytometry](#)
- [Cell Culture](#)

Fas Antibody - Images



Western blot analysis of Fas expression in Ramos cell lysate.