

67kDa Laminin Receptor Antibody
Rabbit mAb
Catalog # AP91048**Specification**

67kDa Laminin Receptor Antibody - Product Information

Application	WB, IHC, FC, ICC, IP
Primary Accession	P08865
Reactivity	Rat
Clonality	Monoclonal
Other Names	
RPSA; 37LRP; 67LR; LAMR1; LAMBR; LamR; LRP/LR; RSSA;	
Isotype	Rabbit IgG
Host	Rabbit
Calculated MW	32854 Da

67kDa Laminin Receptor Antibody - Additional Information

Dilution	WB~~1:1000 IHC~~1:100~500 FC~~1:10~50 ICC~~N/A IP~~N/A
Purification	Affinity-chromatography
Immunogen	A synthesized peptide derived from human 67kDa Laminin Receptor
Description	Required for the assembly and/or stability of the 40S ribosomal subunit. Required for the processing of the 20S rRNA-precursor to mature 18S rRNA in a late step of the maturation of 40S ribosomal subunits. Also functions as a cell surface receptor for laminin. Plays a role in cell adhesion to the basement membrane and in the consequent activation of signaling transduction pathways.
Storage Condition and Buffer	Rabbit IgG in phosphate buffered saline , pH 7.4, 150mM NaCl, 0.02% sodium azide and 50% glycerol. Store at +4°C short term. Store at -20°C long term. Avoid freeze / thaw cycle.

67kDa Laminin Receptor Antibody - Protein Information**Name** RPSA {ECO:0000255|HAMAP-Rule:MF_03016}**Synonyms** LAMBR, LAMR1

Function

Required for the assembly and/or stability of the 40S ribosomal subunit. Required for the processing of the 20S rRNA- precursor to mature 18S rRNA in a late step of the maturation of 40S ribosomal subunits. Also functions as a cell surface receptor for laminin. Plays a role in cell adhesion to the basement membrane and in the consequent activation of signaling transduction pathways. May play a role in cell fate determination and tissue morphogenesis. Acts as a PPP1R16B-dependent substrate of PPP1CA.

Cellular Location

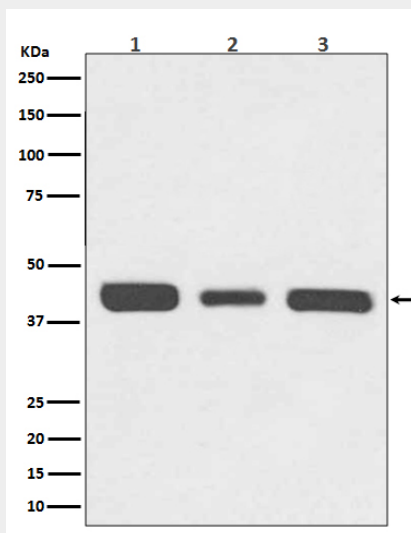
Cell membrane. Cytoplasm. Nucleus {ECO:0000255|HAMAP-Rule:MF_03016}. Note=67LR is found at the surface of the plasma membrane, with its C-terminal laminin-binding domain accessible to extracellular ligands. 37LRP is found at the cell surface, in the cytoplasm and in the nucleus (By similarity) Colocalizes with PPP1R16B in the cell membrane. {ECO:0000255|HAMAP-Rule:MF_03016}

67kDa Laminin Receptor Antibody - Protocols

Provided below are standard protocols that you may find useful for product applications.

- [Western Blot](#)
- [Blocking Peptides](#)
- [Dot Blot](#)
- [Immunohistochemistry](#)
- [Immunofluorescence](#)
- [Immunoprecipitation](#)
- [Flow Cytometry](#)
- [Cell Culture](#)

67kDa Laminin Receptor Antibody - Images



Western blot analysis of 67kDa Laminin Receptor expression in (1) HeLa cell lysate; (2) NIH/3T3 cell lysate; (3) PC-12 cell lysate.