

NEDD8 Antibody
Rabbit mAb
Catalog # AP91053

Specification

NEDD8 Antibody - Product Information

Application	WB, IHC, ICC, IP
Primary Accession	Q15843
Reactivity	Rat
Clonality	Monoclonal
Other Names	
NEDD8; Nedd-8;	
Isotype	Rabbit IgG
Host	Rabbit
Calculated MW	9072 Da

NEDD8 Antibody - Additional Information

Purification	Affinity-chromatography
Immunogen	A synthesized peptide derived from human NEDD8
Description	Neural precursor cell-expressed developmentally downregulated protein 8 (NEDD8), also known as Rub1 (related to ubiquitin 1) in plants and yeast, is a member of the ubiquitin-like protein family. The covalent attachment of NEDD8 to target proteins, termed neddylation, is a reversible, multi-step process analogous to ubiquitination.
Storage Condition and Buffer	Rabbit IgG in phosphate buffered saline , pH 7.4, 150mM NaCl, 0.02% sodium azide and 50% glycerol. Store at +4°C short term. Store at -20°C long term. Avoid freeze / thaw cycle.

NEDD8 Antibody - Protein Information

Name NEDD8 {ECO:0000303|PubMed:9694792, ECO:0000312|HGNC:HGNC:7732}

Function

Ubiquitin-like protein which plays an important role in cell cycle control and embryogenesis via its conjugation to a limited number of cellular proteins, such as cullins or p53/TP53 (PubMed:10318914, PubMed:10597293, PubMed:11953428, PubMed:14690597, PubMed:15242646, PubMed:<a

[9694792](http://www.uniprot.org/citations/9694792), PubMed:<[38605244](http://www.uniprot.org/citations/38605244)>, PubMed:<[38316879](http://www.uniprot.org/citations/38316879)>). Attachment of NEDD8 to cullins is critical for the recruitment of E2 to the cullin-RING- based E3 ubiquitin-protein ligase complex, thus facilitating polyubiquitination and proteasomal degradation of cyclins and other regulatory proteins (PubMed:<[10318914](http://www.uniprot.org/citations/10318914)>, PubMed:<[10597293](http://www.uniprot.org/citations/10597293)>, PubMed:<[11953428](http://www.uniprot.org/citations/11953428)>, PubMed:<[20688984](http://www.uniprot.org/citations/20688984)>, PubMed:<[9694792](http://www.uniprot.org/citations/9694792)>, PubMed:<[38605244](http://www.uniprot.org/citations/38605244)>, PubMed:<[38316879](http://www.uniprot.org/citations/38316879)>). Attachment of NEDD8 to p53/TP53 inhibits p53/TP53 transcriptional activity (PubMed:<[15242646](http://www.uniprot.org/citations/15242646)>). Covalent attachment to its substrates requires prior activation by the E1 complex UBE1C-APPBP1 and linkage to the E2 enzyme UBE2M (PubMed:<[14690597](http://www.uniprot.org/citations/14690597)>).

Cellular Location

Nucleus. Note=Mainly nuclear.

Tissue Location

Highly expressed in heart, skeletal muscle, spleen, thymus, prostate, testis, ovary, colon and leukocytes

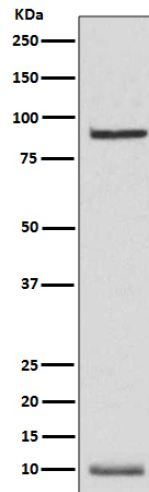
NEDD8 Antibody - Protocols

Provided below are standard protocols that you may find useful for product applications.

- [Western Blot](#)
- [Blocking Peptides](#)
- [Dot Blot](#)
- [Immunohistochemistry](#)
- [Immunofluorescence](#)
- [Immunoprecipitation](#)
- [Flow Cytometry](#)
- [Cell Culture](#)

NEDD8 Antibody - Images





Western blot analysis of NEDD8 expression in K562 cell lysate.