

BMP11 Antibody
Rabbit mAb
Catalog # AP91055**Specification**

BMP11 Antibody - Product Information

Application	WB, IHC, ICC
Primary Accession	O95390
Reactivity	Rat
Clonality	Monoclonal
Other Names	
GDF11; BMP11; Bone morphogenetic protein 11; GDF-11; BMP-11;	
Isotype	Rabbit IgG
Host	Rabbit
Calculated MW	45091 Da

BMP11 Antibody - Additional Information

Dilution	WB~~1:1000 IHC~~1:100~500 ICC~~N/A
Purification	Affinity-chromatography
Immunogen	A synthesized peptide derived from human BMP11
Description	Secreted signal that acts globally to specify positional identity along the anterior/posterior axis during development. Play critical roles in patterning both mesodermal and neural tissues and in establishing the skeletal pattern.
Storage Condition and Buffer	Rabbit IgG in phosphate buffered saline , pH 7.4, 150mM NaCl, 0.02% sodium azide and 50% glycerol. Store at +4°C short term. Store at -20°C long term. Avoid freeze / thaw cycle.

BMP11 Antibody - Protein Information**Name** GDF11**Synonyms** BMP11 {ECO:0000303|PubMed:10075854}**Function**

Secreted signal that acts globally to regulate anterior/posterior axial patterning during development. May play critical roles in patterning both mesodermal and neural tissues (By similarity). It is required for proper vertebral patterning and orofacial development (PubMed:31215115). Signals

through activin receptors type-2, ACVR2A and ACVR2B, and activin receptors type-1, ACVR1B, ACVR1C and TGFBR1 leading to the phosphorylation of SMAD2 and SMAD3 (PubMed:28257634).

Cellular Location

Secreted.

Tissue Location

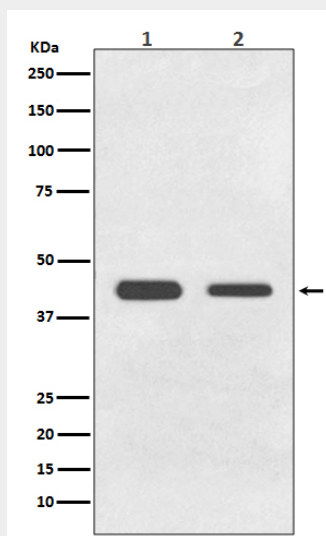
In the embryo, strong expression is seen in the palatal epithelia, including the medial edge epithelial and midline epithelial seam of the palatal shelves. Less pronounced expression is also seen throughout the palatal shelf and tongue mesenchyme

BMP11 Antibody - Protocols

Provided below are standard protocols that you may find useful for product applications.

- [Western Blot](#)
- [Blocking Peptides](#)
- [Dot Blot](#)
- [Immunohistochemistry](#)
- [Immunofluorescence](#)
- [Immunoprecipitation](#)
- [Flow Cytometry](#)
- [Cell Culture](#)

BMP11 Antibody - Images



Western blot analysis of BMP11 expression in (1) HeLa cell lysate; (2) C6 cell lysate.