

**Collagen X Antibody**  
**Rabbit mAb**  
**Catalog # AP91056****Specification**

---

**Collagen X Antibody - Product Information**

Application	WB
Primary Accession	<a href="#">Q03692</a>
Reactivity	Rat
Clonality	Monoclonal
<b>Other Names</b>	
CollagenX; COL10A1; COAA1; Collagen type X alpha 1;	
Isotype	Rabbit IgG
Host	Rabbit
Calculated MW	66158 Da

**Collagen X Antibody - Additional Information**

Dilution	WB~~1:1000
Purification	Affinity-chromatography
Immunogen	A synthesized peptide derived from human Collagen X
Description	Type X collagen is a product of hypertrophic chondrocytes and has been localized to presumptive mineralization zones of hyaline cartilage.
Storage Condition and Buffer	Rabbit IgG in phosphate buffered saline , pH 7.4, 150mM NaCl, 0.02% sodium azide and 50% glycerol. Store at +4°C short term. Store at -20°C long term. Avoid freeze / thaw cycle.

**Collagen X Antibody - Protein Information****Name** COL10A1**Function**

Type X collagen is a product of hypertrophic chondrocytes and has been localized to presumptive mineralization zones of hyaline cartilage.

**Cellular Location**

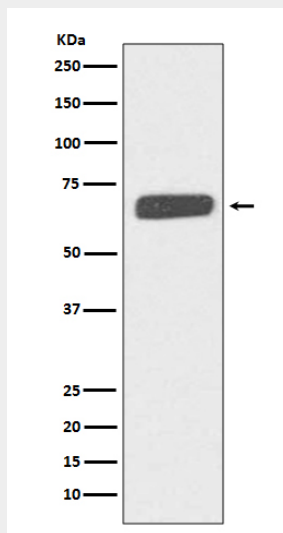
Secreted, extracellular space, extracellular matrix

**Collagen X Antibody - Protocols**

Provided below are standard protocols that you may find useful for product applications.

- [Western Blot](#)
- [Blocking Peptides](#)
- [Dot Blot](#)
- [Immunohistochemistry](#)
- [Immunofluorescence](#)
- [Immunoprecipitation](#)
- [Flow Cytometry](#)
- [Cell Culture](#)

### Collagen X Antibody - Images



Western blot analysis of Collagen X expression in human fetal skin lysate.