

PDI Antibody
Rabbit mAb
Catalog # AP91067

Specification

PDI Antibody - Product Information

Application	WB, FC
Primary Accession	Q13087
Reactivity	Rat
Clonality	Monoclonal
Other Names	
P4HB; PDIA2; PDIR;	
Isotype	Rabbit IgG
Host	Rabbit
Calculated MW	58206 Da

PDI Antibody - Additional Information

Dilution	WB~~1:1000 FC~~1:10~50
Purification	Affinity-chromatography
Immunogen	A synthesized peptide derived from human PDI
Description	Acts as an intracellular estrogen-binding protein. May be involved in modulating cellular levels and biological functions of estrogens in the pancreas. May act as a chaperone that inhibits aggregation of misfolded proteins.
Storage Condition and Buffer	Rabbit IgG in phosphate buffered saline , pH 7.4, 150mM NaCl, 0.02% sodium azide and 50% glycerol. Store at +4°C short term. Store at -20°C long term. Avoid freeze / thaw cycle.

PDI Antibody - Protein Information

Name PDIA2

Synonyms PDIP

Function

Acts as an intracellular estrogen-binding protein. May be involved in modulating cellular levels and biological functions of estrogens in the pancreas. May act as a chaperone that inhibits aggregation of misfolded proteins.

Cellular Location

Endoplasmic reticulum lumen {ECO:0000255|PROSITE- ProRule:PRU10138}

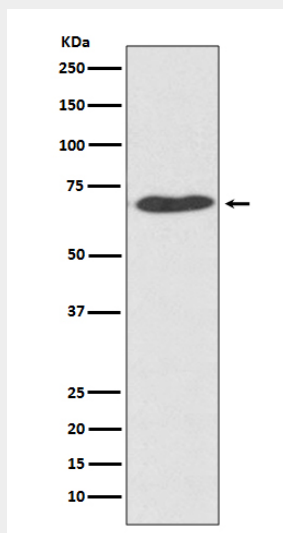
Tissue Location

Highly expressed in pancreas (at protein level).

PDI Antibody - Protocols

Provided below are standard protocols that you may find useful for product applications.

- [Western Blot](#)
- [Blocking Peptides](#)
- [Dot Blot](#)
- [Immunohistochemistry](#)
- [Immunofluorescence](#)
- [Immunoprecipitation](#)
- [Flow Cytometry](#)
- [Cell Culture](#)

PDI Antibody - Images

Western blot analysis of PDI expression in HeLa cell lysate.