

LYVE1 Antibody
Rabbit mAb
Catalog # AP91068

Specification

LYVE1 Antibody - Product Information

Application	WB
Primary Accession	Q9Y5Y7
Reactivity	Rat
Clonality	Monoclonal
Other Names	
CRSBP 1; CRSBP-1; CRSBP1; hyaluronic acid receptor;	
Isotype	Rabbit IgG
Host	Rabbit
Calculated MW	35213 Da

LYVE1 Antibody - Additional Information

Dilution	WB~~1:1000
Purification	Affinity-chromatography
Immunogen	A synthesized peptide derived from human LYVE1
Description	Plays a role in autocrine regulation of cell growth mediated by growth regulators containing cell surface retention sequence binding (CRS). May act as a hyaluronan (HA) transporter, either mediating its uptake for catabolism within lymphatic endothelial cells themselves, or its transport into the lumen of afferent lymphatic vessels for subsequent re-uptake and degradation in lymph nodes.
Storage Condition and Buffer	Rabbit IgG in phosphate buffered saline , pH 7.4, 150mM NaCl, 0.02% sodium azide and 50% glycerol. Store at +4°C short term. Store at -20°C long term. Avoid freeze / thaw cycle.

LYVE1 Antibody - Protein Information

Name LYVE1

Synonyms CRSBP1, HAR, XLKD1

Function

Ligand-specific transporter trafficking between intracellular organelles (TGN) and the plasma membrane. Plays a role in autocrine regulation of cell growth mediated by growth regulators containing cell surface retention sequence binding (CRS). May act as a hyaluronan (HA)

transporter, either mediating its uptake for catabolism within lymphatic endothelial cells themselves, or its transport into the lumen of afferent lymphatic vessels for subsequent re-uptake and degradation in lymph nodes (PubMed:10037799). Binds to pericellular hyaluronan matrices deposited on the surface of leukocytes and facilitates cell adhesion and migration through lymphatic endothelium (PubMed:26823460).

Cellular Location

Cell membrane; Single-pass type I membrane protein. Note=Localized to the plasma membrane and in vesicles near extranuclear membranes which may represent trans- Golgi network (TGN) and endosomes/prelysosomal compartments. Undergoes ligand-dependent internalization and recycling at the cell surface Localizes at cell-cell junctions

Tissue Location

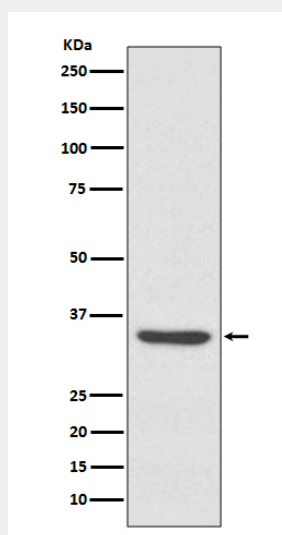
Mainly expressed in endothelial cells lining lymphatic vessels.

LYVE1 Antibody - Protocols

Provided below are standard protocols that you may find useful for product applications.

- [Western Blot](#)
- [Blocking Peptides](#)
- [Dot Blot](#)
- [Immunohistochemistry](#)
- [Immunofluorescence](#)
- [Immunoprecipitation](#)
- [Flow Cytometry](#)
- [Cell Culture](#)

LYVE1 Antibody - Images



Western blot analysis of LYVE1 expression in A549 cell lysate.