

**S100P Antibody**  
**Rabbit mAb**  
**Catalog # AP91076****Specification**

---

**S100P Antibody - Product Information**

Application	WB, IHC, ICC, IP
Primary Accession	<a href="#">P25815</a>
Clonality	Monoclonal
<b>Other Names</b>	
Protein S100-E; Protein S100P; S100 calcium binding protein P; S100E;	

Isotype	Rabbit IgG
Host	Rabbit
Calculated MW	10400 Da

**S100P Antibody - Additional Information**

Dilution	WB~~1:1000 IHC~~1:100~500 ICC~~N/A IP~~N/A
Purification	Affinity-chromatography
Immunogen	A synthesized peptide derived from human S100P
Description	S100 proteins regulate a variety of cellular processes such as cell growth and motility, cell cycle progression, transcription, and differentiation. S100P, a member of the S100 family, is a 95 amino acid protein. Its expression is increased in a number of tumors including pancreas, lung, breast, and ovary carcinomas in response to transcriptional activation.
Storage Condition and Buffer	Rabbit IgG in phosphate buffered saline , pH 7.4, 150mM NaCl, 0.02% sodium azide and 50% glycerol. Store at +4°C short term. Store at -20°C long term. Avoid freeze / thaw cycle.

**S100P Antibody - Protein Information****Name** S100P**Synonyms** S100E**Function**

May function as calcium sensor and contribute to cellular calcium signaling. In a calcium-dependent manner, functions by interacting with other proteins, such as EZR and PPP5C,

and indirectly plays a role in physiological processes like the formation of microvilli in epithelial cells. May stimulate cell proliferation in an autocrine manner via activation of the receptor for activated glycation end products (RAGE).

#### Cellular Location

Nucleus. Cytoplasm. Cell projection, microvillus membrane. Note=Colocalizes with S100PBP in the nucleus. Colocalizes with EZR in the microvilli in a calcium-dependent manner

#### Tissue Location

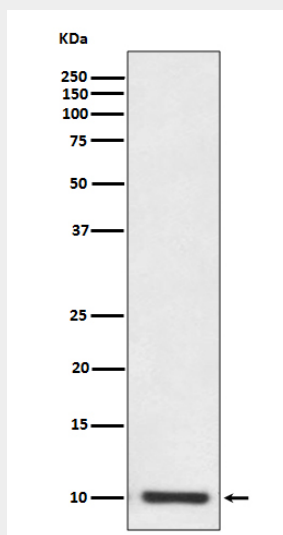
Detected in all of the tissues except brain, testis and small intestine, expression level is higher in placenta, heart, lung, skeletal muscle, spleen and leukocyte. Up-regulated in various pancreatic ductal adenocarcinomas and pancreatic intraepithelial neoplasias.

### S100P Antibody - Protocols

Provided below are standard protocols that you may find useful for product applications.

- [Western Blot](#)
- [Blocking Peptides](#)
- [Dot Blot](#)
- [Immunohistochemistry](#)
- [Immunofluorescence](#)
- [Immunoprecipitation](#)
- [Flow Cytometry](#)
- [Cell Culture](#)

### S100P Antibody - Images



Western blot analysis of S100P expression in SW480 cell lysate.