

**S100A10 Antibody**  
**Rabbit mAb**  
**Catalog # AP91078****Specification**

---

**S100A10 Antibody - Product Information**

|  |                        |
|--|------------------------|
| Application  | <b>WB, IHC</b>         |
| Primary Accession  | <a href="#">P60903</a> |
| Clonality  | <b>Monoclonal</b>      |
| <b>Other Names</b>   |                        |
| Protein S100-A10; Calpactin I light chain; Calpactin-1 light chain; S100A10; ANX2LG; CAL1L; CLP11; |                        |
| Isotype  | <b>Rabbit IgG</b>      |
| Host   | <b>Rabbit</b>          |
| Calculated MW  | <b>11203 Da</b>        |

**S100A10 Antibody - Additional Information**

|                              |  |
|------------------------------|--|
| Dilution                     | <b>WB~~1:1000</b><br><b>IHC~~1:100~500</b>   |
| Purification                 | <b>Affinity-chromatography</b>   |
| Immunogen                    | <b>A synthesized peptide derived from human S100A10</b>  |
| Description                  | <b>S100A10 acts as a cellular chaperone for hepatitis B (Hep B) virus polymerase. Hep B virus polymerase normally localizes to the cytoplasm only, though in the presence of S-100A10 a portion relocates to the nucleus, implying a role for S100A10 and intracellular calcium in the process of viral replication.</b> |
| Storage Condition and Buffer | <b>Rabbit IgG in phosphate buffered saline , pH 7.4, 150mM NaCl, 0.02% sodium azide and 50% glycerol. Store at +4°C short term. Store at -20°C long term. Avoid freeze / thaw cycle.</b>   |

**S100A10 Antibody - Protein Information****Name** S100A10**Synonyms** ANX2LG, CAL1L, CLP11**Function**

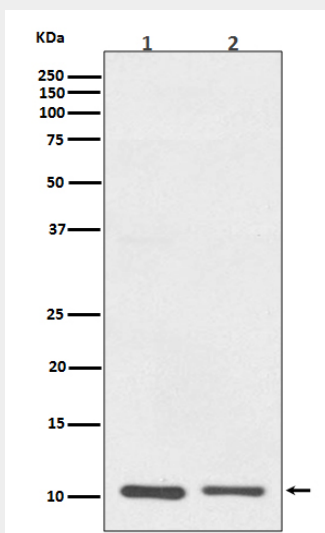
Because S100A10 induces the dimerization of ANXA2/p36, it may function as a regulator of protein phosphorylation in that the ANXA2 monomer is the preferred target (in vitro) of tyrosine-specific kinase.

## S100A10 Antibody - Protocols

Provided below are standard protocols that you may find useful for product applications.

- [Western Blot](#)
- [Blocking Peptides](#)
- [Dot Blot](#)
- [Immunohistochemistry](#)
- [Immunofluorescence](#)
- [Immunoprecipitation](#)
- [Flow Cytometry](#)
- [Cell Culture](#)

## S100A10 Antibody - Images



Western blot analysis of S100A10 expression in (1) A431 cell lysate; (2) RAW264.7 cell lysate.