

**KLF4 Antibody**  
**Rabbit mAb**  
**Catalog # AP91079****Specification**

---

**KLF4 Antibody - Product Information**

Application	WB, IHC, ICC
Primary Accession	<a href="#">O43474</a>
Reactivity	Rat
Clonality	Monoclonal
<b>Other Names</b>	
Krueppel-like factor 4; KLF4; EZF; GKLF;	

Isotype	Rabbit IgG
Host	Rabbit
Calculated MW	54671 Da

**KLF4 Antibody - Additional Information**

Dilution	WB~~1:1000 IHC~~1:100~500 ICC~~N/A
Purification	Affinity-chromatography
Immunogen	A synthesized peptide derived from human KLF4
Description	KLF4 is a member of the erythroid Kruppel-like factor (EKLF) multigene family that is highly expressed in the differentiating layers of the epidermis. KLF4 plays a critical role in the differentiation of epithelial cells and is essential for normal gastric homeostasis and function as both a repressor and activator of transcription.
Storage Condition and Buffer	Rabbit IgG in phosphate buffered saline , pH 7.4, 150mM NaCl, 0.02% sodium azide and 50% glycerol. Store at +4°C short term. Store at -20°C long term. Avoid freeze / thaw cycle.

**KLF4 Antibody - Protein Information****Name** KLF4 ([HGNC:6348](#))**Synonyms** EZF, GKLF**Function**

Transcription factor; can act both as activator and as repressor. Binds the 5'-CACCC-3' core sequence. Binds to the promoter region of its own gene and can activate its own transcription.

Regulates the expression of key transcription factors during embryonic development. Plays an important role in maintaining embryonic stem cells, and in preventing their differentiation. Required for establishing the barrier function of the skin and for postnatal maturation and maintenance of the ocular surface. Involved in the differentiation of epithelial cells and may also function in skeletal and kidney development. Contributes to the down-regulation of p53/TP53 transcription.

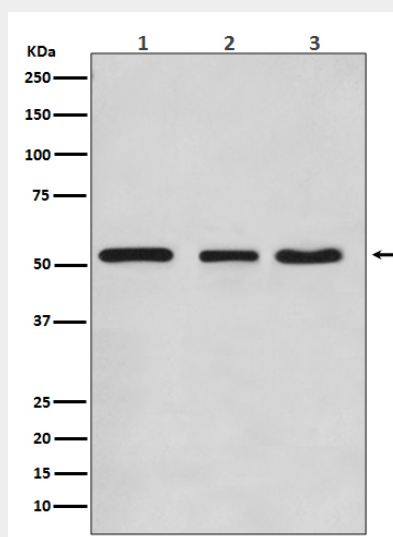
**Cellular Location**

Nucleus {ECO:0000250|UniProtKB:Q60793}. Cytoplasm {ECO:0000250|UniProtKB:Q60793}

**KLF4 Antibody - Protocols**

Provided below are standard protocols that you may find useful for product applications.

- [Western Blot](#)
- [Blocking Peptides](#)
- [Dot Blot](#)
- [Immunohistochemistry](#)
- [Immunofluorescence](#)
- [Immunoprecipitation](#)
- [Flow Cytometry](#)
- [Cell Culture](#)

**KLF4 Antibody - Images**

Western blot analysis of KLF4 expression in (1) HeLa cell lysate; (2) NIH/3T3 cell lysate; (3) C6 cell lysate.