

**Ctip2 Antibody**  
**Rabbit mAb**  
**Catalog # AP91081**

## Specification

---

### Ctip2 Antibody - Product Information

Application	WB
Primary Accession	<a href="#">O9C0K0</a>
Clonality	Monoclonal
<b>Other Names</b>	
ATL1 alpha; ATL1 beta; ATL1 gamma; ATL1 delta; Bcl11b; BCL11B/TRDC fusion; CTIP2; hRIT1 alpha; hRit1; Rit1;	
Isotype	Rabbit IgG
Host	Rabbit
Calculated MW	95519 Da

### Ctip2 Antibody - Additional Information

Dilution	WB~~1:1000
Purification	Affinity-chromatography
Immunogen	A synthesized peptide derived from human Ctip2
Description	Tumor-suppressor protein involved in T-cell lymphomas. May function on the P53-signaling pathway. May be a key regulator of both differentiation and survival during thymocyte development. Repress transcription through direct, TFCOUP2-independent binding to a GC-rich response element.
Storage Condition and Buffer	Rabbit IgG in phosphate buffered saline , pH 7.4, 150mM NaCl, 0.02% sodium azide and 50% glycerol. Store at +4°C short term. Store at -20°C long term. Avoid freeze / thaw cycle.

### Ctip2 Antibody - Protein Information

**Name** BCL11B

**Synonyms** CTIP2, RIT1

#### Function

Key regulator of both differentiation and survival of T- lymphocytes during thymocyte development in mammals. Essential in controlling the responsiveness of hematopoietic stem cells to chemotactic signals by modulating the expression of the receptors CCR7 and CCR9, which direct the movement of progenitor cells from the bone marrow to the thymus (PubMed:<a href="http://www.uniprot.org/citations/27959755" target="\_blank">27959755</a>). Is a regulator

of IL2 promoter and enhances IL2 expression in activated CD4(+) T-lymphocytes (PubMed:<a href="http://www.uniprot.org/citations/16809611" target="\_blank">16809611</a>). Tumor-suppressor that represses transcription through direct, TFCOUP2-independent binding to a GC-rich response element (By similarity). May also function in the P53-signaling pathway (By similarity).

**Cellular Location**

Nucleus.

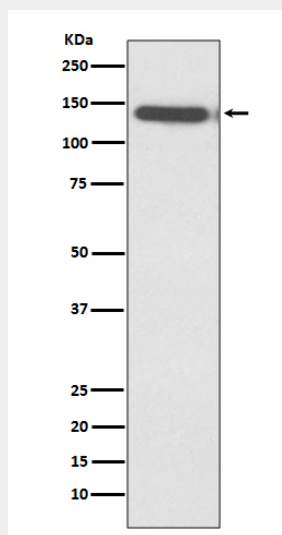
**Tissue Location**

Highly expressed in brain and in malignant T-cell lines derived from patients with adult T-cell leukemia/lymphoma

**Ctip2 Antibody - Protocols**

Provided below are standard protocols that you may find useful for product applications.

- [Western Blot](#)
- [Blocking Peptides](#)
- [Dot Blot](#)
- [Immunohistochemistry](#)
- [Immunofluorescence](#)
- [Immunoprecipitation](#)
- [Flow Cytometry](#)
- [Cell Culture](#)

**Ctip2 Antibody - Images**

Western blot analysis of Ctip2 expression in Jurkat cell lysate.