

Laminin beta 1 Antibody
Rabbit mAb
Catalog # AP91084**Specification**

Laminin beta 1 Antibody - Product Information

Application	WB, FC
Primary Accession	P07942
Reactivity	Rat
Clonality	Monoclonal
Other Names	
CLM; LAMB1; Laminin B1; Laminin beta 1 chain;	
Isotype	Rabbit IgG
Host	Rabbit
Calculated MW	198038 Da

Laminin beta 1 Antibody - Additional Information

Dilution	WB~~1:1000 FC~~1:10~50
Purification	Affinity-chromatography
Immunogen	A synthesized peptide derived from human Laminin beta 1
Description	Binding to cells via a high affinity receptor, laminin is thought to mediate the attachment, migration and organization of cells into tissues during embryonic development by interacting with other extracellular matrix components.
Storage Condition and Buffer	Rabbit IgG in phosphate buffered saline , pH 7.4, 150mM NaCl, 0.02% sodium azide and 50% glycerol. Store at +4°C short term. Store at -20°C long term. Avoid freeze / thaw cycle.

Laminin beta 1 Antibody - Protein Information**Name** LAMB1**Function**

Binding to cells via a high affinity receptor, laminin is thought to mediate the attachment, migration and organization of cells into tissues during embryonic development by interacting with other extracellular matrix components. Involved in the organization of the laminar architecture of cerebral cortex. It is probably required for the integrity of the basement membrane/glia limitans that serves as an anchor point for the endfeet of radial glial cells and as a physical barrier to migrating neurons. Radial glial cells play a central role in cerebral cortical development, where they act both as the proliferative unit of the cerebral cortex and a scaffold for neurons migrating toward the pial surface.

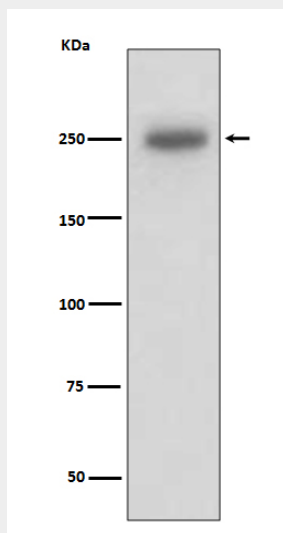
Cellular Location

Secreted, extracellular space, extracellular matrix, basement membrane. Note=Major component

Laminin beta 1 Antibody - Protocols

Provided below are standard protocols that you may find useful for product applications.

- [Western Blot](#)
- [Blocking Peptides](#)
- [Dot Blot](#)
- [Immunohistochemistry](#)
- [Immunofluorescence](#)
- [Immunoprecipitation](#)
- [Flow Cytometry](#)
- [Cell Culture](#)

Laminin beta 1 Antibody - Images

Western blot analysis of Laminin beta 1 expression in A431 cell lysate.