

58K Golgi protein Antibody
Rabbit mAb
Catalog # AP91086**Specification**

58K Golgi protein Antibody - Product Information

Application	WB, IHC, FC
Primary Accession	O95954
Clonality	Monoclonal
Other Names	
Formimidoyltetrahydrofolate cyclodeaminase; FTCD; Glutamate formiminotransferase; LCHC 1;	
Isotype	Rabbit IgG
Host	Rabbit
Calculated MW	58927 Da

58K Golgi protein Antibody - Additional Information

Dilution	WB~~1:1000 IHC~~1:100~500 FC~~1:10~50
Purification	Affinity-chromatography
Immunogen	A synthesized peptide derived from human 58K Golgi protein
Description	Folate-dependent enzyme, that displays both transferase and deaminase activity. Serves to channel one-carbon units from formiminoglutamate to the folate pool. Binds and promotes bundling of vimentin filaments originating from the Golgi.
Storage Condition and Buffer	Rabbit IgG in phosphate buffered saline , pH 7.4, 150mM NaCl, 0.02% sodium azide and 50% glycerol. Store at +4°C short term. Store at -20°C long term. Avoid freeze / thaw cycle.

58K Golgi protein Antibody - Protein Information**Name** FTCD**Function**

Folate-dependent enzyme, that displays both transferase and deaminase activity. Serves to channel one-carbon units from formiminoglutamate to the folate pool.

Cellular Location

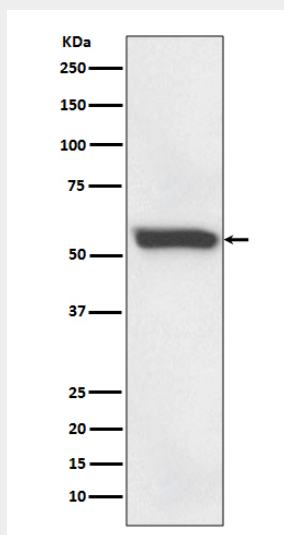
Cytoplasm, cytosol {ECO:0000250|UniProtKB:Q9YH58}. Golgi apparatus {ECO:0000250|UniProtKB:Q9YH58}. Cytoplasm, cytoskeleton, microtubule organizing center, centrosome, centriole Note=More abundantly located around the mother centriole

58K Golgi protein Antibody - Protocols

Provided below are standard protocols that you may find useful for product applications.

- [Western Blot](#)
- [Blocking Peptides](#)
- [Dot Blot](#)
- [Immunohistochemistry](#)
- [Immunofluorescence](#)
- [Immunoprecipitation](#)
- [Flow Cytometry](#)
- [Cell Culture](#)

58K Golgi protein Antibody - Images



Western blot analysis of 58K Golgi protein expression in human fetal liver lysate.