

PDHA1 Antibody
Rabbit mAb
Catalog # AP91087**Specification**

PDHA1 Antibody - Product Information

Application	WB, IHC, FC, ICC, IP
Primary Accession	P08559
Reactivity	Rat
Clonality	Monoclonal
Other Names	
Pyruvate dehydrogenase E1 component subunit alpha, somatic form; mitochondrial; PDHE1-A type I; PDHA1; PHE1A;	
Isotype	Rabbit IgG
Host	Rabbit
Calculated MW	43296 Da

PDHA1 Antibody - Additional Information

Dilution	WB~~1:1000 IHC~~1:100~500 FC~~1:10~50 ICC~~N/A IP~~N/A
Purification	Affinity-chromatography
Immunogen	A synthesized peptide derived from human PDHA1
Description	The PDH complex is composed of multiple copies of three enzymatic components: pyruvate dehydrogenase (E1), dihydrolipoamide acetyltransferase (E2) and lipoamide dehydrogenase (E3). Catalyzes the removal of CO2 from pyruvate. Mutations in the α subunits of pyruvate dehydrogenase (E1) lead to congenital defects that are usually associated with lactic acidosis, neurodegeneration and early death.
Storage Condition and Buffer	Rabbit IgG in phosphate buffered saline , pH 7.4, 150mM NaCl, 0.02% sodium azide and 50% glycerol. Store at +4°C short term. Store at -20°C long term. Avoid freeze / thaw cycle.

PDHA1 Antibody - Protein Information**Name** PDHA1

Synonyms PHE1A**Function**

The pyruvate dehydrogenase complex catalyzes the overall conversion of pyruvate to acetyl-CoA and CO(2), and thereby links the glycolytic pathway to the tricarboxylic cycle.

Cellular Location

Mitochondrion matrix.

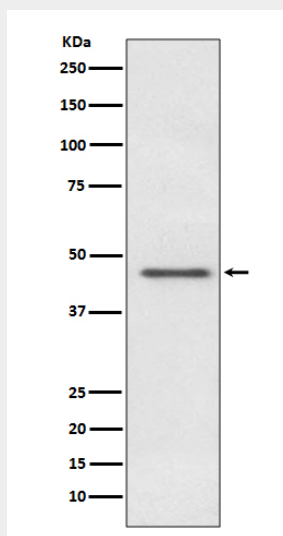
Tissue Location

Ubiquitous.

PDHA1 Antibody - Protocols

Provided below are standard protocols that you may find useful for product applications.

- [Western Blot](#)
- [Blocking Peptides](#)
- [Dot Blot](#)
- [Immunohistochemistry](#)
- [Immunofluorescence](#)
- [Immunoprecipitation](#)
- [Flow Cytometry](#)
- [Cell Culture](#)

PDHA1 Antibody - Images

Western blot analysis of PDHA1 expression in HeLa cell lysate.