

**SERPINA1 Antibody**  
**Rabbit mAb**  
**Catalog # AP91094****Specification**

---

**SERPINA1 Antibody - Product Information**

Application	WB, IHC, ICC, IP
Primary Accession	<a href="#">P01009</a>
Clonality	Monoclonal
<b>Other Names</b>	
Serp1n A1; Short peptide from AAT; SPAAT; AAT;	
Isotype	Rabbit IgG
Host	Rabbit
Calculated MW	46737 Da

**SERPINA1 Antibody - Additional Information**

Dilution	WB~~1:1000 IHC~~1:100~500 ICC~~N/A IP~~N/A
Purification	Affinity-chromatography
Immunogen	A synthesized peptide derived from human SERPINA1
Description	SERPINA1 is secreted and is a serine protease inhibitor which its targets include elastase, plasmin, collagenase, thrombin, leucocytic proteases, trypsin, chymotrypsin, and plasminogen activator. Inhibitor of serine proteases. Its primary target is elastase, but it also has a moderate affinity for plasmin and thrombin.
Storage Condition and Buffer	Rabbit IgG in phosphate buffered saline , pH 7.4, 150mM NaCl, 0.02% sodium azide and 50% glycerol. Store at +4°C short term. Store at -20°C long term. Avoid freeze / thaw cycle.

**SERPINA1 Antibody - Protein Information****Name** SERPINA1 ([HGNC:8941](#))**Synonyms** AAT, PI**Function**

Inhibitor of serine proteases. Its primary target is elastase, but it also has a moderate affinity for plasmin and thrombin. Irreversibly inhibits trypsin, chymotrypsin and plasminogen activator. The

aberrant form inhibits insulin-induced NO synthesis in platelets, decreases coagulation time and has proteolytic activity against insulin and plasmin.

**Cellular Location**

Secreted. Endoplasmic reticulum. Note=The S and Z allele are not secreted effectively and accumulate intracellularly in the endoplasmic reticulum

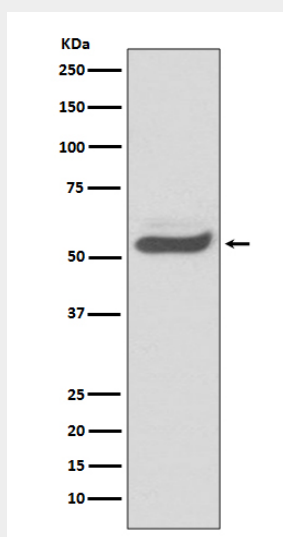
**Tissue Location**

Ubiquitous. Expressed in leukocytes and plasma.

**SERPINA1 Antibody - Protocols**

Provided below are standard protocols that you may find useful for product applications.

- [Western Blot](#)
- [Blocking Peptides](#)
- [Dot Blot](#)
- [Immunohistochemistry](#)
- [Immunofluorescence](#)
- [Immunoprecipitation](#)
- [Flow Cytometry](#)
- [Cell Culture](#)

**SERPINA1 Antibody - Images**

Western blot analysis of SERPINA1 expression in human fetal kidney lysate.