

**SOD1 Antibody**  
**Rabbit mAb**  
**Catalog # AP91097****Specification**

---

**SOD1 Antibody - Product Information**

Application	WB, IHC, FC, ICC
Primary Accession	<a href="#">P00441</a>
Reactivity	Rat
Clonality	Monoclonal
<b>Other Names</b>	
ALS1; HEL S 44; Homodimer; hSod1; Indophenoloxidase A; IPOA; SOD1; SOD2; SODC;	
Isotype	Rabbit IgG
Host	Rabbit
Calculated MW	15936 Da

**SOD1 Antibody - Additional Information**

Dilution	WB~~1:1000 IHC~~1:100~500 FC~~1:10~50 ICC~~N/A
Purification	Affinity-chromatography
Immunogen	A synthesized peptide derived from human SOD1
Description	SOD1, Cu/Zn superoxide dismutase, is a major antioxidant enzyme that catalyzes the conversion of superoxide anion to hydrogen peroxide and molecular oxygen. The mechanism by which mutant SOD1 induces the neurodegeneration observed in ALS is still unclear. Mutant SOD1 proteins become misfolded and consequently oligomerize into high molecular weight species that aggregate and end up in proteinaceous inclusions. Rabbit IgG in phosphate buffered saline , pH 7.4, 150mM NaCl, 0.02% sodium azide and 50% glycerol. Store at +4°C short term. Store at -20°C long term. Avoid freeze / thaw cycle.
Storage Condition and Buffer	

**SOD1 Antibody - Protein Information****Name** SOD1 ([HGNC:11179](#))**Function**

Destroys radicals which are normally produced within the cells and which are toxic to biological

systems.

#### Cellular Location

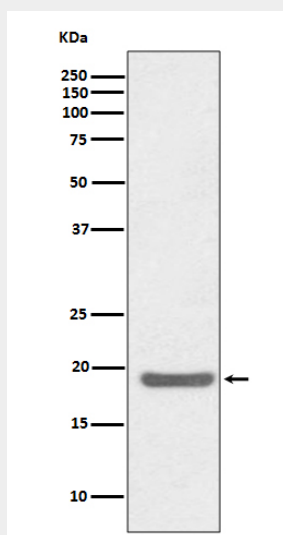
Cytoplasm. Nucleus. Note=Predominantly cytoplasmic; the pathogenic variants ALS1 Arg-86 and Ala-94 gradually aggregates and accumulates in mitochondria.

#### SOD1 Antibody - Protocols

Provided below are standard protocols that you may find useful for product applications.

- [Western Blot](#)
- [Blocking Peptides](#)
- [Dot Blot](#)
- [Immunohistochemistry](#)
- [Immunofluorescence](#)
- [Immunoprecipitation](#)
- [Flow Cytometry](#)
- [Cell Culture](#)

#### SOD1 Antibody - Images



Western blot analysis of CD80 expression in Jurkat cell lysate.