

ERCC1 Antibody
Rabbit mAb
Catalog # AP91099

Specification

ERCC1 Antibody - Product Information

Application	WB, IHC, ICC
Primary Accession	P07992
Clonality	Monoclonal
Other Names	
COFS4; DNA excision repair protein ERCC-1; ERCC1; UV20; RAD10;	

Isotype	Rabbit IgG
Host	Rabbit
Calculated MW	32562 Da

ERCC1 Antibody - Additional Information

Dilution	WB~~1:1000 IHC~~1:100~500 ICC~~N/A
Purification	Affinity-chromatography
Immunogen	A synthesized peptide derived from human ERCC1
Description	DNA repair systems operate in all living cells to manage a variety of DNA lesions. Nucleotide excision repair (NER) is implemented in cases where bulky helix-distorting lesions occur, such as those brought about by UV and certain chemicals. Research studies have shown that expression of ERCC1 is related to survival rate and response to chemotherapeutic drugs in several human cancers including non-small cell lung cancer (NSCLC).
Storage Condition and Buffer	Rabbit IgG in phosphate buffered saline , pH 7.4, 150mM NaCl, 0.02% sodium azide and 50% glycerol. Store at +4°C short term. Store at -20°C long term. Avoid freeze / thaw cycle.

ERCC1 Antibody - Protein Information

Name ERCC1

Function

[Isoform 1]: Non-catalytic component of a structure-specific DNA repair endonuclease responsible for the 5'-incision during DNA repair. Responsible, in conjunction with SLX4, for the first step in the

repair of interstrand cross-links (ICL). Participates in the processing of anaphase bridge-generating DNA structures, which consist in incompletely processed DNA lesions arising during S or G2 phase, and can result in cytokinesis failure. Also required for homology-directed repair (HDR) of DNA double-strand breaks, in conjunction with SLX4.

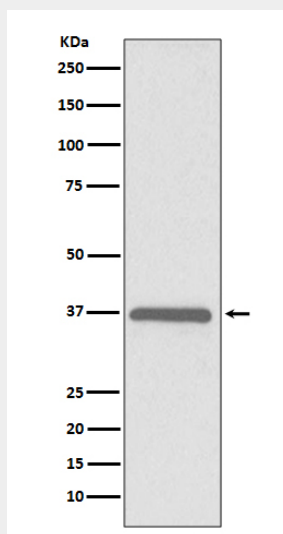
Cellular Location

[Isoform 1]: Nucleus [Isoform 3]: Nucleus

ERCC1 Antibody - Protocols

Provided below are standard protocols that you may find useful for product applications.

- [Western Blot](#)
- [Blocking Peptides](#)
- [Dot Blot](#)
- [Immunohistochemistry](#)
- [Immunofluorescence](#)
- [Immunoprecipitation](#)
- [Flow Cytometry](#)
- [Cell Culture](#)

ERCC1 Antibody - Images

Western blot analysis of ERCC1 expression in HeLa cell lysate.