

**PROX1 Antibody**  
**Rabbit mAb**  
**Catalog # AP91109****Specification**

---

**PROX1 Antibody - Product Information**

Application	WB
Primary Accession	<a href="#">Q92786</a>
Clonality	Monoclonal
<b>Other Names</b>	
Homeobox prospero like protein PROX1; Prospero homeobox protein 1; prospero-related homeobox gene 1; PROX1;	
Isotype	Rabbit IgG
Host	Rabbit
Calculated MW	83203 Da

**PROX1 Antibody - Additional Information**

Dilution	WB~~1:1000
Purification	Affinity-chromatography
Immunogen	A synthesized peptide derived from human PROX1
Description	Plays a critical role in embryonic development and functions as a key regulatory protein in neurogenesis and the development of the heart, eye lens, liver, pancreas and the lymphatic system. Involved in the regulation of the circadian rhythm.
Storage Condition and Buffer	Rabbit IgG in phosphate buffered saline , pH 7.4, 150mM NaCl, 0.02% sodium azide and 50% glycerol. Store at +4°C short term. Store at -20°C long term. Avoid freeze / thaw cycle.

**PROX1 Antibody - Protein Information****Name** PROX1**Function**

Transcription factor involved in developmental processes such as cell fate determination, gene transcriptional regulation and progenitor cell regulation in a number of organs. Plays a critical role in embryonic development and functions as a key regulatory protein in neurogenesis and the development of the heart, eye lens, liver, pancreas and the lymphatic system. Involved in the regulation of the circadian rhythm. Represses: transcription of the retinoid-related orphan receptor RORG, transcriptional activator activity of RORA and RORG and the expression of RORA/G-target genes including core clock components: BMAL1, NPAS2 and CRY1 and metabolic genes: AVPR1A and ELOVL3.

**Cellular Location**

Nucleus {ECO:0000250|UniProtKB:P48437}. Note=RORG promotes its nuclear localization.  
{ECO:0000250|UniProtKB:P48437}

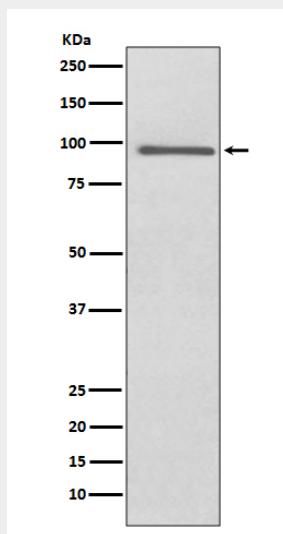
**Tissue Location**

Most actively expressed in the developing lens. Detected also in embryonic brain, lung, liver and kidney. In adult, it is more abundant in heart and liver than in brain, skeletal muscle, kidney and pancreas.

**PROX1 Antibody - Protocols**

Provided below are standard protocols that you may find useful for product applications.

- [Western Blot](#)
- [Blocking Peptides](#)
- [Dot Blot](#)
- [Immunohistochemistry](#)
- [Immunofluorescence](#)
- [Immunoprecipitation](#)
- [Flow Cytometry](#)
- [Cell Culture](#)

**PROX1 Antibody - Images**

Western blot analysis of PROX1 expression in HepG2 cell lysate.