

NUMB Antibody
Rabbit mAb
Catalog # AP91117**Specification**

NUMB Antibody - Product Information

Application	WB
Primary Accession	P49757
Reactivity	Rat
Clonality	Monoclonal
Other Names	
c14_5527; h Numb; Numb; Numb homolog; S171;	
Isotype	Rabbit IgG
Host	Rabbit
Calculated MW	70804 Da

NUMB Antibody - Additional Information

Dilution	WB~~1:1000
Purification	Affinity-chromatography
Immunogen	A synthesized peptide derived from human NUMB
Description	Numb acts as a negative regulator of Notch signaling by promoting ubiquitination and degradation of Notch. The protein is asymmetrically segregated into one daughter cell during cell division, producing two daughter cells with different responses to Notch signaling and different cell fates. The localization of Numb can also be regulated by G-protein coupled receptor (GPCR) and PKC signaling.
Storage Condition and Buffer	Rabbit IgG in phosphate buffered saline , pH 7.4, 150mM NaCl, 0.02% sodium azide and 50% glycerol. Store at +4°C short term. Store at -20°C long term. Avoid freeze / thaw cycle.

NUMB Antibody - Protein Information**Name** NUMB ([HGNC:8060](#))**Function**

Regulates clathrin-mediated receptor endocytosis (PubMed:18657069). Plays a role in the process of neurogenesis (By similarity). Required throughout embryonic neurogenesis to maintain neural progenitor cells, also called radial glial cells (RGCs), by allowing their daughter

cells to choose progenitor over neuronal cell fate (By similarity). Not required for the proliferation of neural progenitor cells before the onset of neurogenesis. Also involved postnatally in the subventricular zone (SVZ) neurogenesis by regulating SVZ neuroblasts survival and ependymal wall integrity (By similarity). May also mediate local repair of brain ventricular wall damage (By similarity).

Cellular Location

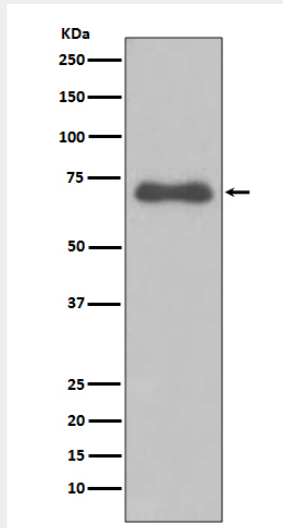
Cell membrane; Peripheral membrane protein; Cytoplasmic side. Endosome membrane; Peripheral membrane protein; Cytoplasmic side. Note=Localizes to perinuclear endosomes in an AAK1-dependent manner.

NUMB Antibody - Protocols

Provided below are standard protocols that you may find useful for product applications.

- [Western Blot](#)
- [Blocking Peptides](#)
- [Dot Blot](#)
- [Immunohistochemistry](#)
- [Immunofluorescence](#)
- [Immunoprecipitation](#)
- [Flow Cytometry](#)
- [Cell Culture](#)

NUMB Antibody - Images



Western blot analysis of NUMB expression in Ramos cell lysate.