

**TRF1 Antibody**  
**Rabbit mAb**  
**Catalog # AP91131**

## Specification

---

### TRF1 Antibody - Product Information

Application	WB, ICC
Primary Accession	<a href="#">P54274</a>
Clonality	Monoclonal
<b>Other Names</b>	
TERF1; PIN2; TRBF1; TRF1;	
Isotype	Rabbit IgG
Host	Rabbit
Calculated MW	50246 Da

### TRF1 Antibody - Additional Information

Purification	Affinity-chromatography
Immunogen	A synthesized peptide derived from human TRF1
Description	Plays an influential role in cellular immortalization and cellular senescence. TRF1 negatively regulates telomere elongation, while TRF2 protects the chromosome ends by inhibiting end-to-end fusions. Down-regulation of TRF expression in tumor cells may contribute to cell immortalization and malignant progression.
Storage Condition and Buffer	Rabbit IgG in phosphate buffered saline , pH 7.4, 150mM NaCl, 0.02% sodium azide and 50% glycerol. Store at +4°C short term. Store at -20°C long term. Avoid freeze / thaw cycle.

### TRF1 Antibody - Protein Information

**Name** TRF1

**Synonyms** PIN2, TRBF1, TRF, TRF1

#### Function

Binds the telomeric double-stranded 5'-TTAGGG-3' repeat and negatively regulates telomere length. Involved in the regulation of the mitotic spindle. Component of the shelterin complex (telosome) that is involved in the regulation of telomere length and protection. Shelterin associates with arrays of double-stranded 5'-TTAGGG-3' repeats added by telomerase and protects chromosome ends; without its protective activity, telomeres are no longer hidden from the DNA damage surveillance and chromosome ends are inappropriately processed by DNA repair

pathways.

#### Cellular Location

Nucleus. Cytoplasm, cytoskeleton, spindle. Chromosome, telomere. Note=Colocalizes with telomeric DNA in interphase and prophase cells. Telomeric localization decreases in metaphase, anaphase and telophase. Associates with the mitotic spindle (PubMed:11943150). Colocalizes with TRIOBP isoform 1 at the telomeres in interphase (PubMed:24692559)

#### Tissue Location

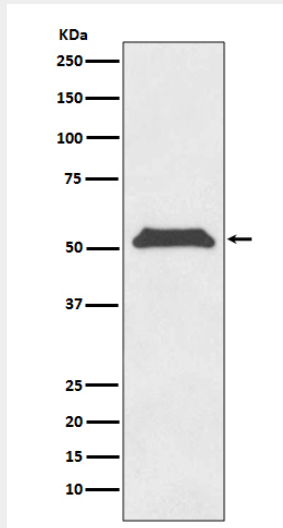
Highly expressed and ubiquitous. Isoform Pin2 predominates

### TRF1 Antibody - Protocols

Provided below are standard protocols that you may find useful for product applications.

- [Western Blot](#)
- [Blocking Peptides](#)
- [Dot Blot](#)
- [Immunohistochemistry](#)
- [Immunofluorescence](#)
- [Immunoprecipitation](#)
- [Flow Cytometry](#)
- [Cell Culture](#)

### TRF1 Antibody - Images



Western blot analysis of TRF1 expression in HeLa cell lysate.