

**MINA53 Antibody**  
**Rabbit mAb**  
**Catalog # AP91150****Specification**

---

**MINA53 Antibody - Product Information**

Application	WB, ICC
Primary Accession	<a href="#">Q8IUF8</a>
Clonality	Monoclonal
<b>Other Names</b>	
Histone lysine demethylase MINA; MDIG; MINA; NO52; ROX;	
Isotype	Rabbit IgG
Host	Rabbit
Calculated MW	52800 Da

**MINA53 Antibody - Additional Information**

Dilution	WB~~1:1000 ICC~~N/A
Purification	Affinity-chromatography
Immunogen	A synthesized peptide derived from human MINA53
Description	Involved in cellular proliferation. May play an important role in cell growth and survival. May be involved in ribosome biogenesis, most likely during the assembly process of pre-ribosomal particles.
Storage Condition and Buffer	Rabbit IgG in phosphate buffered saline , pH 7.4, 150mM NaCl, 0.02% sodium azide and 50% glycerol. Store at +4°C short term. Store at -20°C long term. Avoid freeze / thaw cycle.

**MINA53 Antibody - Protein Information****Name** RIOX2 ([HGNC:19441](#))**Function**

Oxygenase that can act as both a histone lysine demethylase and a ribosomal histidine hydroxylase. Is involved in the demethylation of trimethylated 'Lys-9' on histone H3 (H3K9me3), leading to an increase in ribosomal RNA expression. Also catalyzes the hydroxylation of 60S ribosomal protein L27a on 'His-39'. May play an important role in cell growth and survival. May be involved in ribosome biogenesis, most likely during the assembly process of pre-ribosomal particles.

**Cellular Location**

Nucleus. Nucleus, nucleolus

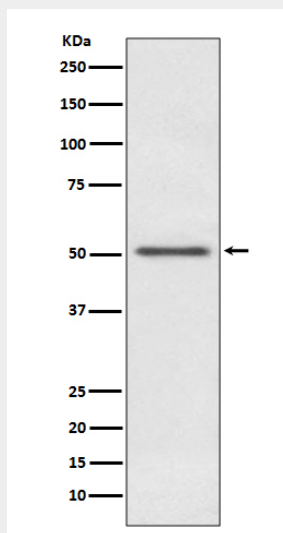
**Tissue Location**

Expressed in liver, skeletal muscle, heart, pancreas, and placenta. Not detected in brain, lung or kidney. Expressed in several lung cancer tissues, but is barely detected in the adjacent non-cancerous tissues. Also highly expressed in several esophageal squamous cell carcinoma (ESCC), and colon cancer tissues, and in various cancer cell lines.

**MINA53 Antibody - Protocols**

Provided below are standard protocols that you may find useful for product applications.

- [Western Blot](#)
- [Blocking Peptides](#)
- [Dot Blot](#)
- [Immunohistochemistry](#)
- [Immunofluorescence](#)
- [Immunoprecipitation](#)
- [Flow Cytometry](#)
- [Cell Culture](#)

**MINA53 Antibody - Images**

Western blot analysis of MINA53 expression in A431 cell lysate.