

Haptoglobin Antibody
Rabbit mAb
Catalog # AP91177**Specification**

Haptoglobin Antibody - Product Information

Application	WB
Primary Accession	P00738
Reactivity	Rat
Clonality	Monoclonal
Other Names	
Binding peptide; Haptoglobin alpha chain; Haptoglobin beta chain; HP2ALPHA2; HPA1S; Zonulin;	
Isotype	Rabbit IgG
Host	Rabbit
Calculated MW	45205 Da

Haptoglobin Antibody - Additional Information

Dilution	WB~~1:1000
Purification	Affinity-chromatography
Immunogen	A synthesized peptide derived from human Haptoglobin
Description	Hemoglobin/haptoglobin complexes are rapidly cleared by the macrophage CD163 scavenger receptor expressed on the surface of liver Kupfer cells through an endocytic lysosomal degradation pathway. Uncleaved haptoglobin, also known as zonulin, plays a role in intestinal permeability, allowing intercellular tight junction disassembly, and controlling the equilibrium between tolerance and immunity to non-self antigens.
Storage Condition and Buffer	Rabbit IgG in phosphate buffered saline , pH 7.4, 150mM NaCl, 0.02% sodium azide and 50% glycerol. Store at +4°C short term. Store at -20°C long term. Avoid freeze / thaw cycle.

Haptoglobin Antibody - Protein Information**Name** HP**Function**

As a result of hemolysis, hemoglobin is found to accumulate in the kidney and is secreted in the urine. Haptoglobin captures, and combines with free plasma hemoglobin to allow hepatic recycling of heme iron and to prevent kidney damage. Haptoglobin also acts as an antioxidant, has antibacterial activity, and plays a role in modulating many aspects of the acute phase response.

Hemoglobin/haptoglobin complexes are rapidly cleared by the macrophage CD163 scavenger receptor expressed on the surface of liver Kupfer cells through an endocytic lysosomal degradation pathway.

Cellular Location

Secreted.

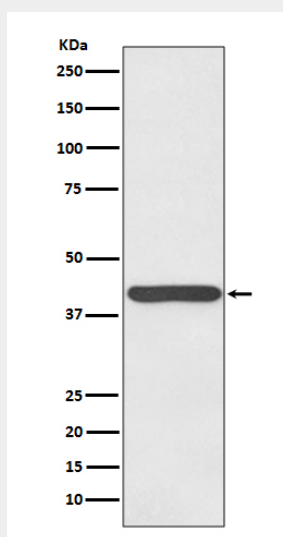
Tissue Location

Expressed by the liver and secreted in plasma.

Haptoglobin Antibody - Protocols

Provided below are standard protocols that you may find useful for product applications.

- [Western Blot](#)
- [Blocking Peptides](#)
- [Dot Blot](#)
- [Immunohistochemistry](#)
- [Immunofluorescence](#)
- [Immunoprecipitation](#)
- [Flow Cytometry](#)
- [Cell Culture](#)

Haptoglobin Antibody - Images

Western blot analysis of Haptoglobin expression in human plasma lysate.