

TIMP2 Antibody
Rabbit mAb
Catalog # AP91186**Specification**

TIMP2 Antibody - Product Information

Application	WB, FC
Primary Accession	P16035
Clonality	Monoclonal
Other Names	
CSC21K; TIMP 2; TIMP2;	
Isotype	Rabbit IgG
Host	Rabbit
Calculated MW	24399 Da

TIMP2 Antibody - Additional Information

Dilution	WB~~1:1000 FC~~1:10~50
Purification	Affinity-chromatography
Immunogen	A synthesized peptide derived from human TIMP2
Description	Complexes with metalloproteinases (such as collagenases) and irreversibly inactivates them by binding to their catalytic zinc cofactor. Known to act on MMP-1, MMP-2, MMP-3, MMP-7, MMP-8, MMP-9, MMP-10, MMP-13, MMP-14, MMP-15, MMP-16 and MMP-19.
Storage Condition and Buffer	Rabbit IgG in phosphate buffered saline , pH 7.4, 150mM NaCl, 0.02% sodium azide and 50% glycerol. Store at +4°C short term. Store at -20°C long term. Avoid freeze / thaw cycle.

TIMP2 Antibody - Protein Information**Name** TIMP2**Function**

Complexes with metalloproteinases (such as collagenases) and irreversibly inactivates them by binding to their catalytic zinc cofactor. Known to act on MMP-1, MMP-2, MMP-3, MMP-7, MMP-8, MMP-9, MMP-10, MMP-13, MMP-14, MMP-15, MMP-16 and MMP-19.

Cellular Location

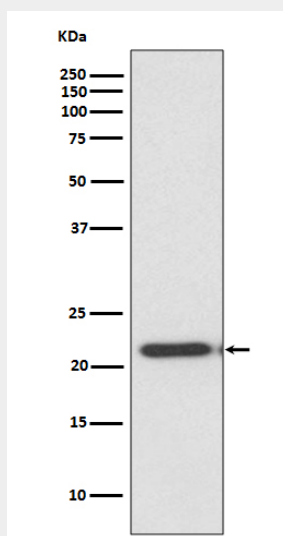
Secreted.

TIMP2 Antibody - Protocols

Provided below are standard protocols that you may find useful for product applications.

- [Western Blot](#)
- [Blocking Peptides](#)
- [Dot Blot](#)
- [Immunohistochemistry](#)
- [Immunofluorescence](#)
- [Immunoprecipitation](#)
- [Flow Cytometry](#)
- [Cell Culture](#)

TIMP2 Antibody - Images



Western blot analysis of TIMP2 expression in HeLa cell lysate.