

**TLR5 Antibody**  
**Rabbit mAb**  
**Catalog # AP91187**

## Specification

---

### TLR5 Antibody - Product Information

Application	WB
Primary Accession	<a href="#">O60602</a>
Reactivity	Rat
Clonality	Monoclonal
<b>Other Names</b>	
SLEB1; TIL3; Tlr5; Toll like receptor 5 precursor;	
Isotype	Rabbit IgG
Host	Rabbit
Calculated MW	97834 Da

### TLR5 Antibody - Additional Information

Dilution	WB~~1:1000
Purification	Affinity-chromatography
Immunogen	A synthesized peptide derived from human TLR5
Description	Six human homologs of the Drosophila Toll receptor were initially identified based on their sequence similarities and designated toll-like receptors (TLR). Participates in the innate immune response to microbial agents. Mediates detection of bacterial flagellins. Acts via MYD88 and TRAF6, leading to NF-kappa-B activation, cytokine secretion and the inflammatory response. Rabbit IgG in phosphate buffered saline , pH 7.4, 150mM NaCl, 0.02% sodium azide and 50% glycerol. Store at +4°C short term. Store at -20°C long term. Avoid freeze / thaw cycle.
Storage Condition and Buffer	

### TLR5 Antibody - Protein Information

**Name** TLR5

**Synonyms** TIL3

#### Function

Pattern recognition receptor (PRR) located on the cell surface that participates in the activation of innate immunity and inflammatory response (PubMed:<a href="http://www.uniprot.org/citations/11323673" target="\_blank">11323673</a>, PubMed:<a href="http://www.uniprot.org/citations/18490781" target="\_blank">18490781</a>). Recognizes

small molecular motifs named pathogen-associated molecular pattern (PAMPs) expressed by pathogens and microbe-associated molecular patterns (MAMPs) usually expressed by resident microbiota (PubMed:<a href="http://www.uniprot.org/citations/29934223" target="\_blank">29934223</a>). Upon ligand binding such as bacterial flagellins, recruits intracellular adapter proteins MYD88 and TRIF leading to NF- kappa-B activation, cytokine secretion and induction of the inflammatory response (PubMed:<a href="http://www.uniprot.org/citations/11489966" target="\_blank">11489966</a>, PubMed:<a href="http://www.uniprot.org/citations/20855887" target="\_blank">20855887</a>). Plays thereby an important role in the relationship between the intestinal epithelium and enteric microbes and contributes to the gut microbiota composition throughout life (By similarity).

#### Cellular Location

Cell membrane; Single-pass type I membrane protein

#### Tissue Location

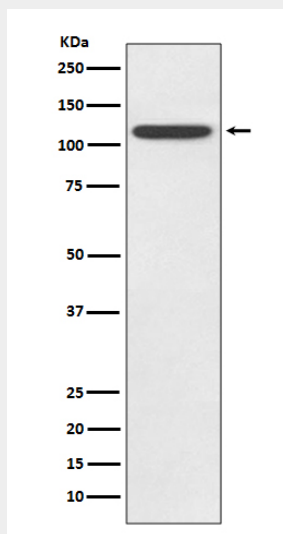
Highly expressed on the basolateral surface of intestinal epithelia (PubMed:11489966). Expressed also in other cells such as lung epithelial cells (PubMed:11489966, PubMed:18490781)

#### TLR5 Antibody - Protocols

Provided below are standard protocols that you may find useful for product applications.

- [Western Blot](#)
- [Blocking Peptides](#)
- [Dot Blot](#)
- [Immunohistochemistry](#)
- [Immunofluorescence](#)
- [Immunoprecipitation](#)
- [Flow Cytometry](#)
- [Cell Culture](#)

#### TLR5 Antibody - Images



Western blot analysis of TLR5 expression in HeLa cell lysate.