

Growth Hormone Antibody
Rabbit mAb
Catalog # AP91188**Specification**

Growth Hormone Antibody - Product Information

Application	WB, IHC, IP
Primary Accession	P01241
Clonality	Monoclonal
Other Names	
GH1; GHN; Growth hormone 1; hGH-N; IGHD1B; Pituitary growth hormone; RNGHGP; Somatotropin;	
Isotype	Rabbit IgG
Host	Rabbit
Calculated MW	24847 Da

Growth Hormone Antibody - Additional Information

Dilution	WB~~1:1000 IHC~~1:100~500 IP~~N/A
Purification	Affinity-chromatography
Immunogen	A synthesized peptide derived from human Growth Hormone
Description	Plays an important role in growth control. Its major role in stimulating body growth is to stimulate the liver and other tissues to secrete IGF-1. It stimulates both the differentiation and proliferation of myoblasts. It also stimulates amino acid uptake and protein synthesis in muscle and other tissues.
Storage Condition and Buffer	Rabbit IgG in phosphate buffered saline , pH 7.4, 150mM NaCl, 0.02% sodium azide and 50% glycerol. Store at +4°C short term. Store at -20°C long term. Avoid freeze / thaw cycle.

Growth Hormone Antibody - Protein Information**Name** GH1**Function**

Plays an important role in growth control. Its major role in stimulating body growth is to stimulate the liver and other tissues to secrete IGF1. It stimulates both the differentiation and proliferation of myoblasts. It also stimulates amino acid uptake and protein synthesis in muscle and other tissues.

Cellular Location

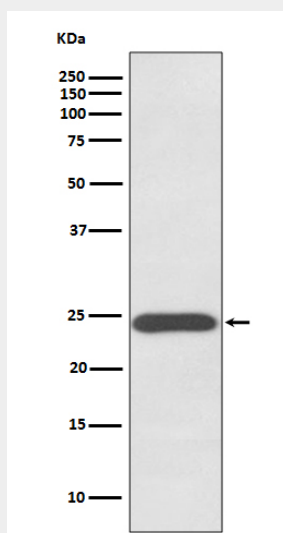
Secreted

Growth Hormone Antibody - Protocols

Provided below are standard protocols that you may find useful for product applications.

- [Western Blot](#)
- [Blocking Peptides](#)
- [Dot Blot](#)
- [Immunohistochemistry](#)
- [Immunofluorescence](#)
- [Immunoprecipitation](#)
- [Flow Cytometry](#)
- [Cell Culture](#)

Growth Hormone Antibody - Images



Western blot analysis of Growth Hormone expression in human placenta lysate.