

AMPD2 Antibody (Center)
Purified Rabbit Polyclonal Antibody (Pab)
Catalog # AP9118c**Specification**

AMPD2 Antibody (Center) - Product Information

Application	WB, IHC-P, FC,E
Primary Accession	Q01433
Reactivity	Human
Host	Rabbit
Clonality	Polyclonal
Isotype	Rabbit IgG
Calculated MW	94890
Antigen Region	187-217

AMPD2 Antibody (Center) - Additional Information**Gene ID** 271**Other Names**

AMP deaminase 2, AMP deaminase isoform L, AMPD2

Target/Specificity

This AMPD2 antibody is generated from rabbits immunized with a KLH conjugated synthetic peptide between 187-217 amino acids from the Central region of human AMPD2.

Dilution

WB~~1:1000
IHC-P~~1:50~100
FC~~1:10~50

Format

Purified polyclonal antibody supplied in PBS with 0.09% (W/V) sodium azide. This antibody is prepared by Saturated Ammonium Sulfate (SAS) precipitation followed by dialysis against PBS.

Storage

Maintain refrigerated at 2-8°C for up to 2 weeks. For long term storage store at -20°C in small aliquots to prevent freeze-thaw cycles.

Precautions

AMPD2 Antibody (Center) is for research use only and not for use in diagnostic or therapeutic procedures.

AMPD2 Antibody (Center) - Protein Information**Name** AMPD2 ([HGNC:469](#))**Function** AMP deaminase plays a critical role in energy metabolism. Catalyzes the deamination of

AMP to IMP and plays an important role in the purine nucleotide cycle.

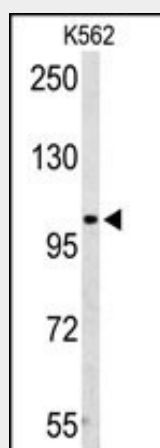
Tissue Location

Highly expressed in cerebellum.

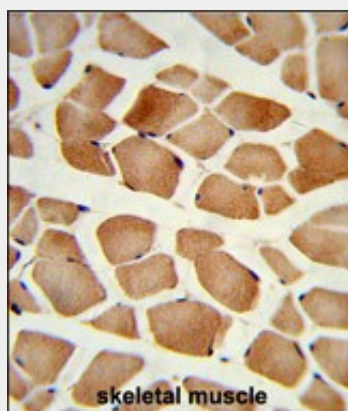
AMPD2 Antibody (Center) - Protocols

Provided below are standard protocols that you may find useful for product applications.

- [Western Blot](#)
- [Blocking Peptides](#)
- [Dot Blot](#)
- [Immunohistochemistry](#)
- [Immunofluorescence](#)
- [Immunoprecipitation](#)
- [Flow Cytometry](#)
- [Cell Culture](#)

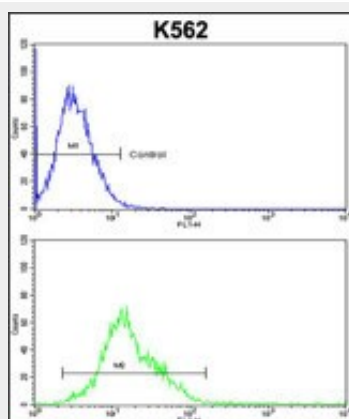
AMPD2 Antibody (Center) - Images

Western blot analysis of AMPD2 Antibody (Center) (Cat. #AP9118c) in K562 cell line lysates (35ug/lane). AMPD2 (arrow) was detected using the purified Pab.



Formalin-fixed and paraffin-embedded human skeletal muscle reacted with AMPD2 Antibody (Center), which was peroxidase-conjugated to the secondary antibody, followed by DAB staining. This data demonstrates the use of this antibody for immunohistochemistry; clinical relevance has

not been evaluated.



AMPD2 Antibody (Center) (Cat. #AP9118c) flow cytometric analysis of k562 cells (bottom histogram) compared to a negative control cell (top histogram). FITC-conjugated goat-anti-rabbit secondary antibodies were used for the analysis.

AMPD2 Antibody (Center) - Background

AMP deaminase plays a critical role in energy metabolism.

AMPD2 Antibody (Center) - References

Haas, A.L. et.al., Biochem. Biophys. Res. Commun. 305 (2), 421-427 (2003)
Mahnke-Zizelman, D.K., et.al., Biochim. Biophys. Acta 1308 (2), 122-132 (1996)