

VAMP2 Antibody
Rabbit mAb
Catalog # AP91199**Specification**

VAMP2 Antibody - Product Information

Application	WB, FC, ICC, IP
Primary Accession	P63027
Reactivity	Rat
Clonality	Monoclonal
Other Names	
RATVAMPB; RATVAMPIR; SYB2; Synaptobrevin 2; Vamp2l; Vesicle-associated membrane protein 2 (synaptobrevin 2);	
Isotype	Rabbit IgG
Host	Rabbit
Calculated MW	12663 Da

VAMP2 Antibody - Additional Information

Dilution	WB~~1:1000 FC~~1:10~50 ICC~~N/A IP~~N/A
Purification	Affinity-chromatography
Immunogen	A synthesized peptide derived from human VAMP2
Description	The SNARE complex is involved in vesicular transport and membrane fusion, a process regulated by calcium. In neurons, VAMP2 is predominantly inserted in presynaptic vesicle membranes. Assembly of VAMP2 with the plasma membrane SNAREs syntaxin 1 and SNAP25 is a key event necessary for membrane fusion and neurotransmitter release.
Storage Condition and Buffer	Rabbit IgG in phosphate buffered saline , pH 7.4, 150mM NaCl, 0.02% sodium azide and 50% glycerol. Store at +4°C short term. Store at -20°C long term. Avoid freeze / thaw cycle.

VAMP2 Antibody - Protein Information**Name** VAMP2 ([HGNC:12643](#))**Synonyms** SYB2**Function**

Involved in the targeting and/or fusion of transport vesicles to their target membrane (By similarity). Major SNARE protein of synaptic vesicles which mediates fusion of synaptic vesicles to release neurotransmitters. Essential for fast vesicular exocytosis and activity-dependent neurotransmitter release as well as fast endocytosis that mediates rapid reuse of synaptic vesicles (By similarity) (PubMed:30929742). Modulates the gating characteristics of the delayed rectifier voltage-dependent potassium channel KCNB1.

Cellular Location

Cytoplasmic vesicle, secretory vesicle, synaptic vesicle membrane; Single-pass type IV membrane protein. Cell membrane {ECO:0000250|UniProtKB:P63045}. Note=Colocalizes with PRKCZ and WDFY2 in intracellular vesicles (PubMed:17313651)

Tissue Location

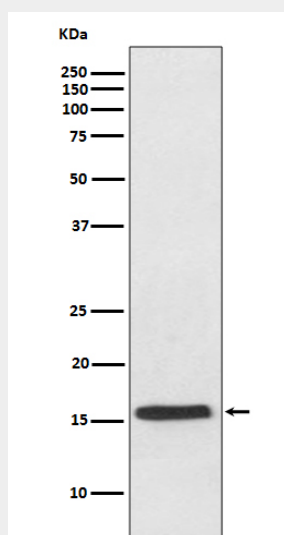
Nervous system and skeletal muscle.

VAMP2 Antibody - Protocols

Provided below are standard protocols that you may find useful for product applications.

- [Western Blot](#)
- [Blocking Peptides](#)
- [Dot Blot](#)
- [Immunohistochemistry](#)
- [Immunofluorescence](#)
- [Immunoprecipitation](#)
- [Flow Cytometry](#)
- [Cell Culture](#)

VAMP2 Antibody - Images



Western blot analysis of VAMP2 expression in mouse brain lysate.