

**ADAMDEC1 Antibody (N-term)**  
**Purified Rabbit Polyclonal Antibody (Pab)**  
**Catalog # AP9119a****Specification**

---

**ADAMDEC1 Antibody (N-term) - Product Information**

Application	FC, IHC-P, WB,E
Primary Accession	<a href="#">O15204</a>
Reactivity	Human
Host	Rabbit
Clonality	Polyclonal
Isotype	Rabbit IgG
Calculated MW	52775
Antigen Region	39-69

**ADAMDEC1 Antibody (N-term) - Additional Information****Gene ID** 27299**Other Names**

ADAM DEC1, 3424-, A disintegrin and metalloproteinase domain-like protein decysin-1, ADAM-like protein decysin-1, ADAMDEC1

**Target/Specificity**

This ADAMDEC1 antibody is generated from rabbits immunized with a KLH conjugated synthetic peptide between 39-69 amino acids from the N-terminal region of human ADAMDEC1.

**Dilution**

FC~~1:10~50

IHC-P~~1:50~100

WB~~1:1000

E~~Use at an assay dependent concentration.

**Format**

Purified polyclonal antibody supplied in PBS with 0.09% (W/V) sodium azide. This antibody is prepared by Saturated Ammonium Sulfate (SAS) precipitation followed by dialysis against PBS.

**Storage**

Maintain refrigerated at 2-8°C for up to 2 weeks. For long term storage store at -20°C in small aliquots to prevent freeze-thaw cycles.

**Precautions**

ADAMDEC1 Antibody (N-term) is for research use only and not for use in diagnostic or therapeutic procedures.

**ADAMDEC1 Antibody (N-term) - Protein Information****Name** ADAMDEC1

**Function** May play an important role in the control of the immune response and during pregnancy.

**Cellular Location**

Secreted.

**Tissue Location**

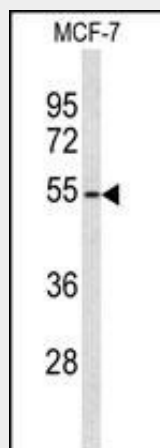
Expressed highly in the small intestine and appendix, moderately in lymph node, mucosal lining of the colon, thymus, spleen and very weakly in the bone marrow. Predominantly expressed in dendritic cells (DC) of the germinal center. Weakly expressed in monocyte and highly expressed in macrophage. Absent in immature DC.

**ADAMDEC1 Antibody (N-term) - Protocols**

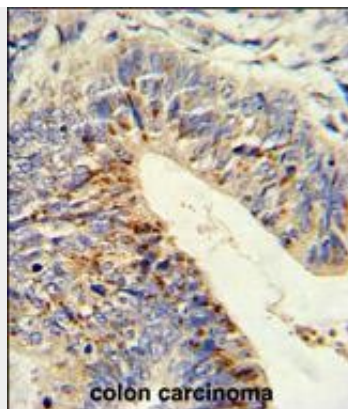
Provided below are standard protocols that you may find useful for product applications.

- [Western Blot](#)
- [Blocking Peptides](#)
- [Dot Blot](#)
- [Immunohistochemistry](#)
- [Immunofluorescence](#)
- [Immunoprecipitation](#)
- [Flow Cytometry](#)
- [Cell Culture](#)

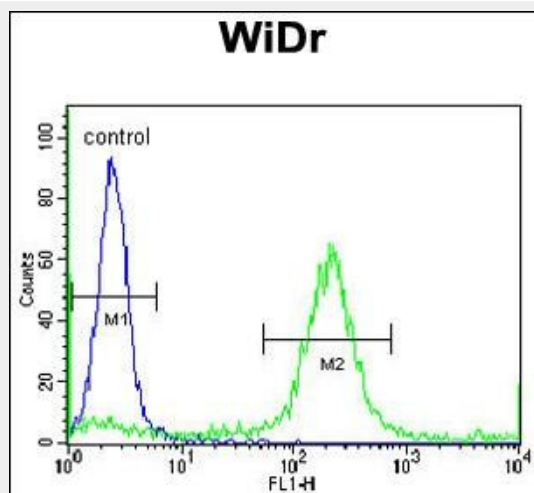
**ADAMDEC1 Antibody (N-term) - Images**



Western blot analysis of ADAMDEC1 Antibody (N-term) (Cat. #AP9119a) in MCF-7 cell line lysates (35ug/lane). ADAMDEC1 (arrow) was detected using the purified Pab.



Formalin-fixed and paraffin-embedded human colon carcinoma reacted with ADAMDEC1 Antibody (N-term), which was peroxidase-conjugated to the secondary antibody, followed by DAB staining. This data demonstrates the use of this antibody for immunohistochemistry; clinical relevance has not been evaluated.



ADAMDEC1 Antibody (N-term) (Cat. #AP9119a) flow cytometric analysis of WiDr cells (right histogram) compared to a negative control cell (left histogram). FITC-conjugated goat-anti-rabbit secondary antibodies were used for the analysis.

#### **ADAMDEC1 Antibody (N-term) - Background**

ADAMDEC1 may play an important role in the control of the immune response and during pregnancy.

#### **ADAMDEC1 Antibody (N-term) - References**

Liu T., et.al., J. Proteome Res. 4:2070-2080(2005).