

**DCAMKL1 Antibody**  
**Rabbit mAb**  
**Catalog # AP91203****Specification**

---

**DCAMKL1 Antibody - Product Information**

|  |                        |
|--|------------------------|
| Application                              | WB, IHC, ICC           |
| Primary Accession                        | <a href="#">O15075</a> |
| Reactivity                               | Rat                    |
| Clonality                                | Monoclonal             |
| <b>Other Names</b>                       |                        |
| CL1; CLICK1; Cpg16; DCDC3A; Dclk; Dclk1; |                        |
| Isotype                                  | Rabbit IgG             |
| Host                                     | Rabbit                 |
| Calculated MW                            | 82224 Da               |

**DCAMKL1 Antibody - Additional Information**

|                              |   |
|------------------------------|---|
| Dilution                     | WB~~1:1000<br>IHC~~1:100~500<br>ICC~~N/A  |
| Purification                 | Affinity-chromatography   |
| Immunogen                    | A synthesized peptide derived from human DCAMKL1  |
| Description                  | Probable kinase that may be involved in a calcium-signaling pathway controlling neuronal migration in the developing brain. May also participate in functions of the mature nervous system. |
| Storage Condition and Buffer | Rabbit IgG in phosphate buffered saline , pH 7.4, 150mM NaCl, 0.02% sodium azide and 50% glycerol. Store at +4°C short term. Store at -20°C long term. Avoid freeze / thaw cycle.           |

**DCAMKL1 Antibody - Protein Information****Name** DCLK1**Synonyms** DCAMKL1, DCDC3A, KIAA0369**Function**

Probable kinase that may be involved in a calcium-signaling pathway controlling neuronal migration in the developing brain. May also participate in functions of the mature nervous system.

**Tissue Location**

In fetal tissues, highly expressed in brain, detectable in lung and liver, but not in kidney. In adult tissues, expressed ubiquitously in the brain, detectable in the heart, liver, spleen, thymus,

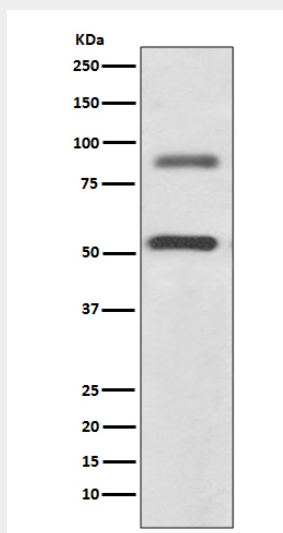
prostate, testis, ovary, small intestine and colon. The type A isoforms seem to be expressed predominantly in fetal brain whereas type B isoforms are expressed abundantly in both fetal and adult brain.

### **DCAMKL1 Antibody - Protocols**

Provided below are standard protocols that you may find useful for product applications.

- [Western Blot](#)
- [Blocking Peptides](#)
- [Dot Blot](#)
- [Immunohistochemistry](#)
- [Immunofluorescence](#)
- [Immunoprecipitation](#)
- [Flow Cytometry](#)
- [Cell Culture](#)

### **DCAMKL1 Antibody - Images**



Western blot analysis of DCAMKL1 expression in SH-SY5Y cell lysate;.