

L1CAM Antibody
Rabbit mAb
Catalog # AP91206**Specification**

L1CAM Antibody - Product Information

Application	WB, IHC
Primary Accession	P32004
Clonality	Monoclonal
Other Names	
CAML1; CD171; HSAS1; Hyd; L1-NCAM; MASA; MIC5; NCAML1; NILE; S10; SPG1;	
Isotype	Rabbit IgG
Host	Rabbit
Calculated MW	140003 Da

L1CAM Antibody - Additional Information

Dilution	WB~~1:1000 IHC~~1:100~500
Purification	Affinity-chromatography
Immunogen	A synthesized peptide derived from human L1CAM
Description	Cell adhesion molecule with an important role in the development of the nervous system. Involved in neuron-neuron adhesion, neurite fasciculation, outgrowth of neurites, etc. Binds to axonin on neurons.
Storage Condition and Buffer	Rabbit IgG in phosphate buffered saline , pH 7.4, 150mM NaCl, 0.02% sodium azide and 50% glycerol. Store at +4°C short term. Store at -20°C long term. Avoid freeze / thaw cycle.

L1CAM Antibody - Protein Information**Name** L1CAM**Synonyms** CAML1, MIC5**Function**

Neural cell adhesion molecule involved in the dynamics of cell adhesion and in the generation of transmembrane signals at tyrosine kinase receptors. During brain development, critical in multiple processes, including neuronal migration, axonal growth and fasciculation, and synaptogenesis. In the mature brain, plays a role in the dynamics of neuronal structure and function, including synaptic plasticity.

Cellular Location

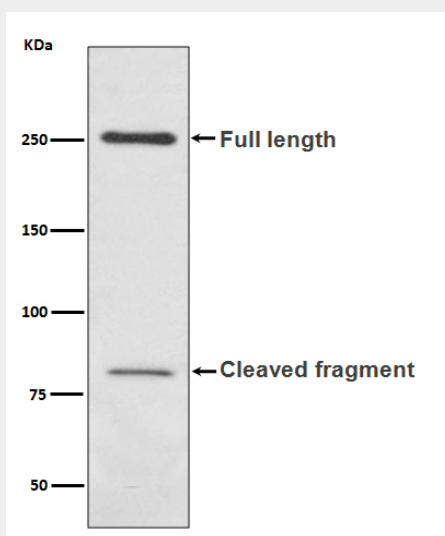
Cell membrane; Single-pass type I membrane protein {ECO:0000250|UniProtKB:Q05695}. Cell projection, growth cone {ECO:0000250|UniProtKB:Q05695}. Cell projection, axon. Cell projection, dendrite Note=Colocalized with SHTN1 in close apposition with actin filaments in filopodia and lamellipodia of axonal growth cones of hippocampal neurons (By similarity). In neurons, detected predominantly in axons and cell body, weak localization to dendrites (PubMed:20621658) {ECO:0000250|UniProtKB:Q05695, ECO:0000269|PubMed:20621658}

L1CAM Antibody - Protocols

Provided below are standard protocols that you may find useful for product applications.

- [Western Blot](#)
- [Blocking Peptides](#)
- [Dot Blot](#)
- [Immunohistochemistry](#)
- [Immunofluorescence](#)
- [Immunoprecipitation](#)
- [Flow Cytometry](#)
- [Cell Culture](#)

L1CAM Antibody - Images



Western blot analysis of L1CAM expression in human fetal kidney lysate.