

Syndecan 1 Antibody
Rabbit mAb
Catalog # AP91222**Specification**

Syndecan 1 Antibody - Product Information

Application	WB, IHC, ICC
Primary Accession	P18827
Reactivity	Rat
Clonality	Monoclonal
Other Names	
CD138; CD138 antigen; heparan sulfate proteoglycan fibroblast growth factor receptor; Sdc1; SYND1; Syndecan 1; syndecan proteoglycan 1;	
Isotype	Rabbit IgG
Host	Rabbit
Calculated MW	32462 Da

Syndecan 1 Antibody - Additional Information

Dilution	WB~~1:1000 IHC~~1:100~500 ICC~~N/A
Purification	Affinity-chromatography
Immunogen	A synthesized peptide derived from human Syndecan 1
Description	Cell surface proteoglycan that bears both heparan sulfate and chondroitin sulfate and that links the cytoskeleton to the interstitial matrix.
Storage Condition and Buffer	Rabbit IgG in phosphate buffered saline , pH 7.4, 150mM NaCl, 0.02% sodium azide and 50% glycerol. Store at +4°C short term. Store at -20°C long term. Avoid freeze / thaw cycle.

Syndecan 1 Antibody - Protein Information**Name** SDC1 ([HGNC:10658](#))**Synonyms** SDC**Function**

Cell surface proteoglycan that contains both heparan sulfate and chondroitin sulfate and that links the cytoskeleton to the interstitial matrix (By similarity). Regulates exosome biogenesis in concert with SDCBP and PDCD6IP (PubMed:22660413). Able to induce its own expression in dental mesenchymal cells and also in the neighboring dental epithelial cells via an MSX1-mediated pathway (By similarity).

Cellular Location

Membrane; Single-pass type I membrane protein. Secreted Secreted, extracellular exosome
Note=Shedding of the ectodomain produces a soluble form

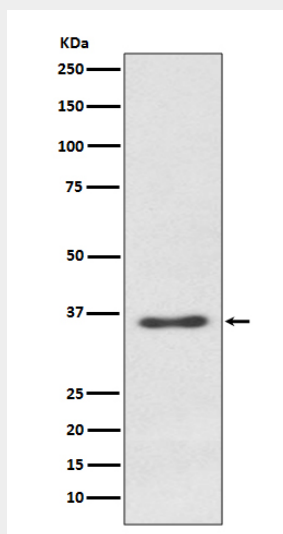
Tissue Location

Detected in placenta (at protein level) (PubMed:32337544). Detected in fibroblasts (at protein level) (PubMed:36213313).

Syndecan 1 Antibody - Protocols

Provided below are standard protocols that you may find useful for product applications.

- [Western Blot](#)
- [Blocking Peptides](#)
- [Dot Blot](#)
- [Immunohistochemistry](#)
- [Immunofluorescence](#)
- [Immunoprecipitation](#)
- [Flow Cytometry](#)
- [Cell Culture](#)

Syndecan 1 Antibody - Images

Western blot analysis of Syndecan 1 expression in Ramos cell lysate.