

Tyrosinase Antibody
Rabbit mAb
Catalog # AP91227**Specification**

Tyrosinase Antibody - Product Information

Application	WB, IHC, ICC
Primary Accession	P14679
Clonality	Monoclonal
Other Names	
ATN; CMM8; LB24 AB; SHEP3; SK29 AB; Tumor rejection antigen AB; TYR;	
Isotype	Rabbit IgG
Host	Rabbit
Calculated MW	60393 Da

Tyrosinase Antibody - Additional Information

Dilution	WB~~1:1000 IHC~~1:100~500 ICC~~N/A
Purification	Affinity-chromatography
Immunogen	A synthesized peptide derived from human Tyrosinase
Description	Tyrosinase, found in the membrane of melanosomes, is a key enzyme in the biosynthesis of melanin pigments. It is a melanocyte differentiation antigen and is expressed in normal melanocytes and malignant melanomas. Tyrosinase is implicated to be an antigen target for melanoma vaccines.
Storage Condition and Buffer	Rabbit IgG in phosphate buffered saline , pH 7.4, 150mM NaCl, 0.02% sodium azide and 50% glycerol. Store at +4°C short term. Store at -20°C long term. Avoid freeze / thaw cycle.

Tyrosinase Antibody - Protein Information**Name** TYR ([HGNC:12442](#))**Function**

This is a copper-containing oxidase that functions in the formation of pigments such as melanins and other polyphenolic compounds. Catalyzes the initial and rate limiting step in the cascade of reactions leading to melanin production from tyrosine (By similarity). In addition to hydroxylating tyrosine to DOPA (3,4- dihydroxyphenylalanine), also catalyzes the oxidation of DOPA to DOPA-quinone, and possibly the oxidation of DHI (5,6-dihydroxyindole) to indole-5,6 quinone (PubMed:28661582).

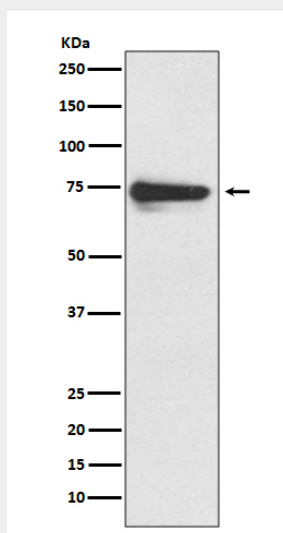
Cellular Location

Melanosome membrane; Single-pass type I membrane protein. Melanosome {ECO:0000250|UniProtKB:P11344}. Note=Proper trafficking to melanosome is regulated by SGSM2, ANKRD27, RAB9A, RAB32 and RAB38 {ECO:0000250|UniProtKB:P11344}

Tyrosinase Antibody - Protocols

Provided below are standard protocols that you may find useful for product applications.

- [Western Blot](#)
- [Blocking Peptides](#)
- [Dot Blot](#)
- [Immunohistochemistry](#)
- [Immunofluorescence](#)
- [Immunoprecipitation](#)
- [Flow Cytometry](#)
- [Cell Culture](#)

Tyrosinase Antibody - Images

Western blot analysis of Tyrosinase expression in human melanoma lysate.