

**CREM Antibody (C-term)**  
**Purified Rabbit Polyclonal Antibody (Pab)**  
**Catalog # AP9122b****Specification**

---

**CREM Antibody (C-term) - Product Information**

Application	FC, WB,E
Primary Accession	<a href="#">Q03060</a>
Other Accession	<a href="#">Q03061</a> , <a href="#">P27699</a> , <a href="#">Q1LZH5</a>
Reactivity	Human
Predicted	Bovine, Mouse, Rat
Host	Rabbit
Clonality	Polyclonal
Isotype	Rabbit IgG
Antigen Region	287-314

**CREM Antibody (C-term) - Additional Information****Gene ID** 1390**Other Names**

cAMP-responsive element modulator, Inducible cAMP early repressor, ICER, CREM

**Target/Specificity**

This CREM antibody is generated from rabbits immunized with a KLH conjugated synthetic peptide between 287-314 amino acids from the C-terminal region of human CREM.

**Dilution**

FC~~1:10~50

WB~~1:1000

E~~Use at an assay dependent concentration.

**Format**

Purified polyclonal antibody supplied in PBS with 0.09% (W/V) sodium azide. This antibody is prepared by Saturated Ammonium Sulfate (SAS) precipitation followed by dialysis against PBS.

**Storage**

Maintain refrigerated at 2-8°C for up to 2 weeks. For long term storage store at -20°C in small aliquots to prevent freeze-thaw cycles.

**Precautions**

CREM Antibody (C-term) is for research use only and not for use in diagnostic or therapeutic procedures.

**CREM Antibody (C-term) - Protein Information****Name** CREM ([HGNC:2352](#))

**Function** Transcriptional regulator that binds the cAMP response element (CRE), a sequence present in many viral and cellular promoters. Isoforms are either transcriptional activators or repressors. Plays a role in spermatogenesis and is involved in spermatid maturation (PubMed:[10373550](#)).

**Cellular Location**

Nucleus.

**Tissue Location**

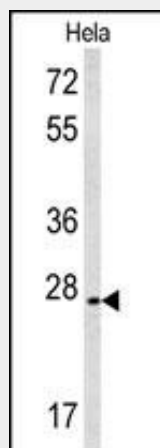
Expressed in testes (round spermatids) (at protein level). Isoform 14 is the major activator form in testes

**CREM Antibody (C-term) - Protocols**

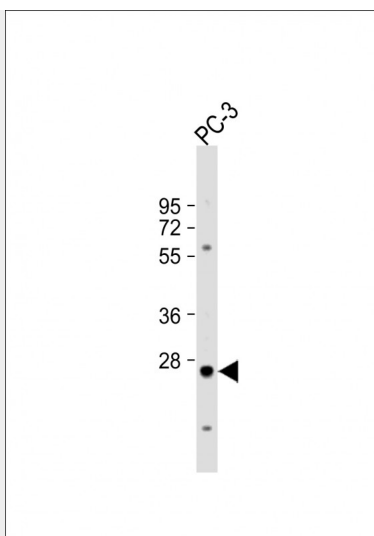
Provided below are standard protocols that you may find useful for product applications.

- [Western Blot](#)
- [Blocking Peptides](#)
- [Dot Blot](#)
- [Immunohistochemistry](#)
- [Immunofluorescence](#)
- [Immunoprecipitation](#)
- [Flow Cytometry](#)
- [Cell Culture](#)

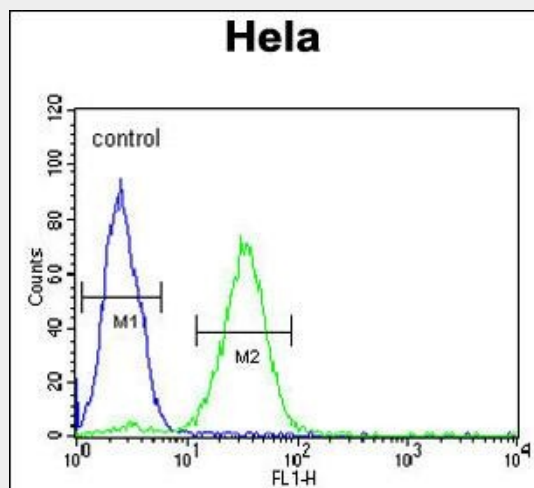
**CREM Antibody (C-term) - Images**



Western blot analysis of CREM Antibody (C-term) (Cat. #AP9122b) in HeLa cell line lysates (35ug/lane). CREM (arrow) was detected using the purified Pab.



Anti-CREM Antibody (C-term) at 1:1000 dilution + PC-3 whole cell lysate Lysates/proteins at 20 µg per lane. Secondary Goat Anti-Rabbit IgG, (H+L), Peroxidase conjugated at 1/10000 dilution. Predicted band size : 39 kDa Blocking/Dilution buffer: 5% NFDM/TBST.



CREM Antibody (C-term) (Cat. #AP9122b) flow cytometric analysis of HeLa cells (right histogram) compared to a negative control (PBS alone) (left histogram). FITC-conjugated goat-anti-rabbit secondary antibodies were used for the analysis.

#### CREM Antibody (C-term) - Background

CREM is a bZIP transcription factor that binds to the cAMP responsive element found in many viral and cellular promoters. It is an important component of cAMP-mediated signal transduction during the spermatogenic cycle, as well as other complex processes.

#### CREM Antibody (C-term) - References

Fujimoto, T., et al., J. Biochem. 115 (2), 298-303 (1994)