

Hepcidin Antibody
Rabbit mAb
Catalog # AP91230**Specification**

Hepcidin Antibody - Product Information

| | |
|-------------------|------------------------|
| Application | WB |
| Primary Accession | P81172 |
| Reactivity | Rat |
| Clonality | Monoclonal |

Other Names

Hepcidin; Liver-expressed antimicrobial peptide 1; LEAP-1; Putative liver tumor regressor; PLTR; Hepcidin-25; Hepc25; Hepcidin-20; Hepc20; HAMP; HEPC; LEAP1;

| | |
|---------------|------------|
| Isotype | Rabbit IgG |
| Host | Rabbit |
| Calculated MW | 9408 Da |

Hepcidin Antibody - Additional Information

| | |
|------------------------------|---|
| Dilution | WB~~1:1000 |
| Purification | Affinity-chromatography |
| Immunogen | A synthesized peptide derived from human Hepcidin |
| Description | Hepcidin, also known as HAMP, HEPC, LEAP1 or HFE2B, is an 84 amino acid secreted protein that regulates iron-related signaling events. Acts by promoting endocytosis and degradation of ferroportin, leading to the retention of iron in iron-exporting cells and decreased flow of iron into plasma. |
| Storage Condition and Buffer | Rabbit IgG in phosphate buffered saline , pH 7.4, 150mM NaCl, 0.02% sodium azide and 50% glycerol. Store at +4°C short term. Store at -20°C long term. Avoid freeze / thaw cycle. |

Hepcidin Antibody - Protein Information

Name HAMP ([HGNC:15598](#))

Synonyms HEPC, LEAP1

Function

Liver-produced hormone that constitutes the main circulating regulator of iron absorption and distribution across tissues. Acts by promoting endocytosis and degradation of ferroportin/SLC40A1, leading to the retention of iron in iron-exporting cells and decreased flow of iron into plasma (PubMed:22682227),

PubMed:29237594,
PubMed:32814342).
Controls the major flows of iron into plasma: absorption of dietary iron in the intestine, recycling of iron by macrophages, which phagocytose old erythrocytes and other cells, and mobilization of stored iron from hepatocytes (PubMed:22306005).

Cellular Location

Secreted.

Tissue Location

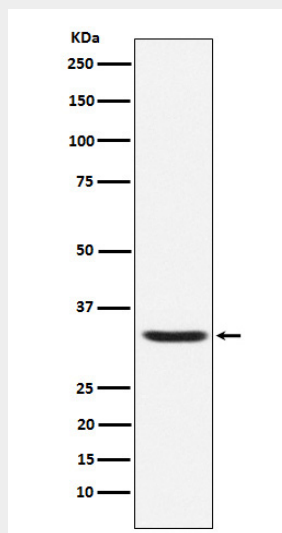
Highest expression in liver and to a lesser extent in heart and brain. Low levels in lung, tonsils, salivary gland, trachea, prostate gland, adrenal gland and thyroid gland. Secreted into the urine and blood (PubMed:11034317). Expressed by hepatocytes (PubMed:15124018).

Hepcidin Antibody - Protocols

Provided below are standard protocols that you may find useful for product applications.

- [Western Blot](#)
- [Blocking Peptides](#)
- [Dot Blot](#)
- [Immunohistochemistry](#)
- [Immunofluorescence](#)
- [Immunoprecipitation](#)
- [Flow Cytometry](#)
- [Cell Culture](#)

Hepcidin Antibody - Images



Western blot analysis of Hepcidin expression in Human Hepcidin Full-length Recombinant Protein (GFP Tagged).