

**ERp57 Antibody**  
Rabbit mAb  
Catalog # AP91247

## Specification

---

### ERp57 Antibody - Product Information

Application	WB, IHC, IP
Primary Accession	<a href="#">P30101</a>
Clonality	Monoclonal
<b>Other Names</b>	
ERp57; ERp60; ERp61; Glucose Regulated Protein 58 Kd; HsT17083; p58; PDIA3; Phospholipase C alpha; PI PLC;	
Isotype	Rabbit IgG
Host	Rabbit
Calculated MW	56782 Da

### ERp57 Antibody - Additional Information

Dilution	WB~~1:1000 IHC~~1:100~500 IP~~N/A
Purification	Affinity-chromatography
Immunogen	A synthesized peptide derived from human ERp57
Description	Detected in the flagellum and head region of spermatozoa (at protein level).
Storage Condition and Buffer	Rabbit IgG in phosphate buffered saline , pH 7.4, 150mM NaCl, 0.02% sodium azide and 50% glycerol. Store at +4°C short term. Store at -20°C long term. Avoid freeze / thaw cycle.

### ERp57 Antibody - Protein Information

Name PDIA3 ([HGNC:4606](#))

**Synonyms** ERP57, ERP60, GRP58

#### Function

Protein disulfide isomerase that catalyzes the formation, isomerization, and reduction or oxidation of disulfide bonds in client proteins and functions as a protein folding chaperone (PubMed: [11825568](http://www.uniprot.org/citations/11825568), PubMed: [16193070](http://www.uniprot.org/citations/16193070), PubMed: [27897272](http://www.uniprot.org/citations/27897272), PubMed: [36104323](http://www.uniprot.org/citations/36104323), PubMed: [7487104](http://www.uniprot.org/citations/7487104)). Core component of the major histocompatibility complex class I (MHC I) peptide loading complex where it functions as an essential folding chaperone for TAPBP. Through TAPBP, assists the dynamic

assembly of the MHC I complex with high affinity antigens in the endoplasmic reticulum. Therefore, plays a crucial role in the presentation of antigens to cytotoxic T cells in adaptive immunity (PubMed:<a href="http://www.uniprot.org/citations/35948544" target="\_blank">35948544</a>, PubMed:<a href="http://www.uniprot.org/citations/36104323" target="\_blank">36104323</a>).

#### Cellular Location

Endoplasmic reticulum. Endoplasmic reticulum lumen {ECO:0000250|UniProtKB:P11598}. Melanosome Note=Identified by mass spectrometry in melanosome fractions from stage I to stage IV (PubMed:12643545).

#### Tissue Location

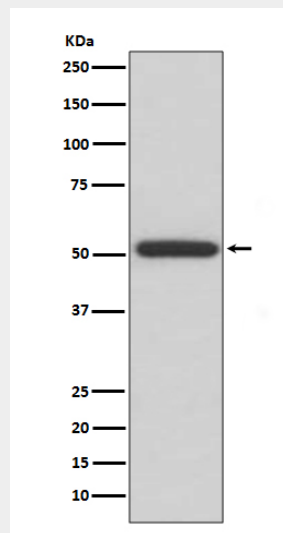
Detected in the flagellum and head region of spermatozoa (at protein level) (PubMed:20400973). Expressed in liver, stomach and colon (at protein level). Expressed in gastric parietal cells and chief cells (at protein level) (PubMed:24188822)

### ERp57 Antibody - Protocols

Provided below are standard protocols that you may find useful for product applications.

- [Western Blot](#)
- [Blocking Peptides](#)
- [Dot Blot](#)
- [Immunohistochemistry](#)
- [Immunofluorescence](#)
- [Immunoprecipitation](#)
- [Flow Cytometry](#)
- [Cell Culture](#)

### ERp57 Antibody - Images



Western blot analysis of ERp57 expression in HepG2 cell lysate.