

**Lactoferrin Antibody**  
**Rabbit mAb**  
**Catalog # AP91251****Specification**

---

**Lactoferrin Antibody - Product Information**

Application	WB, IHC, IP
Primary Accession	<a href="#">P02788</a>
Clonality	Monoclonal
<b>Other Names</b>	
GIG12; Growth inhibiting protein 12; HLF2; Kaliocin 1; Lactoferrin; Lactoferroxin-C; Lactotransferrin; LF; LTF; Neutrophil lactoferrin; Talalactoferrin;	
Isotype	Rabbit IgG
Host	Rabbit
Calculated MW	78182 Da

**Lactoferrin Antibody - Additional Information**

Dilution	WB~~1:1000 IHC~~1:100~500 IP~~N/A
Purification	Affinity-chromatography
Immunogen	A synthesized peptide derived from human Lactoferrin
Description	Lactoferroxins A, B and C have opioid antagonist activity. Lactoferroxin A shows preference for mu-receptors, while lactoferroxin B and C have somewhat higher degrees of preference for kappa-receptors than for mu-receptors.
Storage Condition and Buffer	Rabbit IgG in phosphate buffered saline , pH 7.4, 150mM NaCl, 0.02% sodium azide and 50% glycerol. Store at +4°C short term. Store at -20°C long term. Avoid freeze / thaw cycle.

**Lactoferrin Antibody - Protein Information****Name** LTF ([HGNC:6720](#))**Synonyms** GIG12, LF**Function**

Transferrins are iron binding transport proteins which can bind two Fe(3+) ions in association with the binding of an anion, usually bicarbonate.

**Cellular Location**

[Isoform 1]: Secreted. Cytoplasmic granule. Note=Secreted into most exocrine fluids by various

endothelial cells Stored in the secondary granules of neutrophils

#### **Tissue Location**

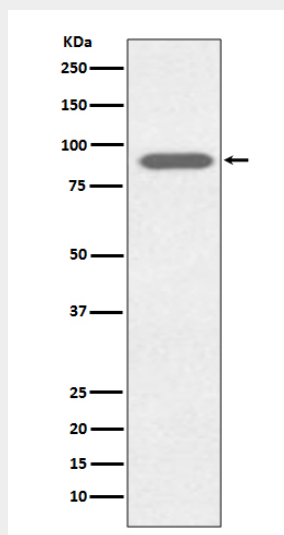
High levels are found in saliva and tears, intermediate levels in serum and plasma, and low levels in urine. In kidney, detected in the distal collecting tubules in the medulla but not in the cortical region or in blood vessels. Detected in peripheral blood neutrophils (at protein level). Isoform 1 and isoform DeltaLf are expressed in breast, prostate, spleen, pancreas, kidney, small intestine, lung, skeletal muscle, uterus, thymus and fetal liver Isoform 1 is expressed in brain, testis and peripheral blood leukocytes; isoform DeltaLf is barely detectable in these tissues Isoform DeltaLf is expressed in placenta, liver and ovary; isoform 1 is barely detectable in these tissues. In kidney, isoform 1 is expressed at high levels in the collecting tubules of the medulla but at very low levels in the cortex.

#### **Lactoferrin Antibody - Protocols**

Provided below are standard protocols that you may find useful for product applications.

- [Western Blot](#)
- [Blocking Peptides](#)
- [Dot Blot](#)
- [Immunohistochemistry](#)
- [Immunofluorescence](#)
- [Immunoprecipitation](#)
- [Flow Cytometry](#)
- [Cell Culture](#)

#### **Lactoferrin Antibody - Images**



Western blot analysis of Lactoferrin expression in HeLa cell lysate.