

**A2M Antibody**  
**Rabbit mAb**  
**Catalog # AP91252**

## Specification

---

### A2M Antibody - Product Information

|  |                        |
|--|------------------------|
| Application  | WB, IHC                |
| Primary Accession  | <a href="#">P01023</a> |
| Clonality  | Monoclonal             |
| <b>Other Names</b>   |                        |
| A2m; Alpha 2M; Alpha-2-macroglobulin; C3 and PZP-like alpha-2-macroglobulin domain-containing protein 5; CPAMD5; FWP007; S863 7; |                        |
| Isotype  | Rabbit IgG             |
| Host   | Rabbit                 |
| Calculated MW  | 163291 Da              |

### A2M Antibody - Additional Information

|                              |   |
|------------------------------|---|
| Dilution                     | WB~~1:1000<br>IHC~~1:100~500  |
| Purification                 | Affinity-chromatography   |
| Immunogen                    | A synthesized peptide derived from human A2M  |
| Description                  | Alpha-2-macroglobulin is a protease inhibitor and cytokine transporter. It inhibits many proteases, including trypsin, thrombin and collagenase. A2M is implicated in Alzheimer disease (AD) due to its ability to mediate the clearance and degradation of A-beta, the major component of beta-amyloid deposits. |
| Storage Condition and Buffer | Rabbit IgG in phosphate buffered saline , pH 7.4, 150mM NaCl, 0.02% sodium azide and 50% glycerol. Store at +4°C short term. Store at -20°C long term. Avoid freeze / thaw cycle.   |

### A2M Antibody - Protein Information

**Name** A2M

**Synonyms** CPAMD5

#### Function

Is able to inhibit all four classes of proteinases by a unique 'trapping' mechanism. This protein has a peptide stretch, called the 'bait region' which contains specific cleavage sites for different proteinases. When a proteinase cleaves the bait region, a conformational change is induced in the protein which traps the proteinase. The entrapped enzyme remains active against low molecular

weight substrates (activity against high molecular weight substrates is greatly reduced). Following cleavage in the bait region, a thioester bond is hydrolyzed and mediates the covalent binding of the protein to the proteinase.

**Cellular Location**

Secreted.

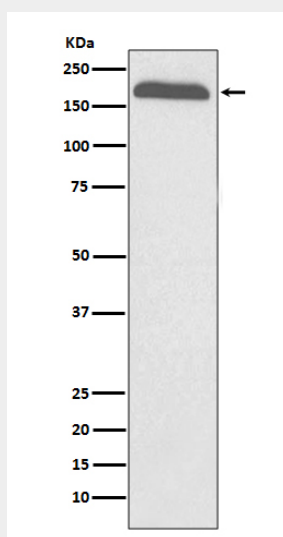
**Tissue Location**

Secreted in plasma..

**A2M Antibody - Protocols**

Provided below are standard protocols that you may find useful for product applications.

- [Western Blot](#)
- [Blocking Peptides](#)
- [Dot Blot](#)
- [Immunohistochemistry](#)
- [Immunofluorescence](#)
- [Immunoprecipitation](#)
- [Flow Cytometry](#)
- [Cell Culture](#)

**A2M Antibody - Images**

Western blot analysis of A2M expression in human plasma lysate.