

G-CSF Antibody
Rabbit mAb
Catalog # AP91255

Specification

G-CSF Antibody - Product Information

Application	WB, ICC, IP
Primary Accession	P09919
Reactivity	Rat
Clonality	Monoclonal
Other Names	
CSF beta; CSF3; CSF3OS; Csf3; Filgrastim; G-CSF; GCSA; GCSF; MGI 2; Pluripoietin;	
Isotype	Rabbit IgG
Host	Rabbit
Calculated MW	22293 Da

G-CSF Antibody - Additional Information

Dilution	WB~~1:1000 ICC~~N/A IP~~N/A
Purification	Affinity-chromatography
Immunogen	A synthesized peptide derived from human G-CSF
Description	Granulocyte/macrophage colony-stimulating factors are cytokines that act in hematopoiesis by controlling the production, differentiation, and function of 2 related white cell populations of the blood, the granulocytes and the monocytes-macrophages. This CSF induces granulocytes.
Storage Condition and Buffer	Rabbit IgG in phosphate buffered saline , pH 7.4, 150mM NaCl, 0.02% sodium azide and 50% glycerol. Store at +4°C short term. Store at -20°C long term. Avoid freeze / thaw cycle.

G-CSF Antibody - Protein Information

Name CSF3

Synonyms C17orf33, GCSF

Function

Granulocyte/macrophage colony-stimulating factors are cytokines that act in hematopoiesis by controlling the production, differentiation, and function of 2 related white cell populations of the blood, the granulocytes and the monocytes-macrophages. This CSF induces granulocytes.

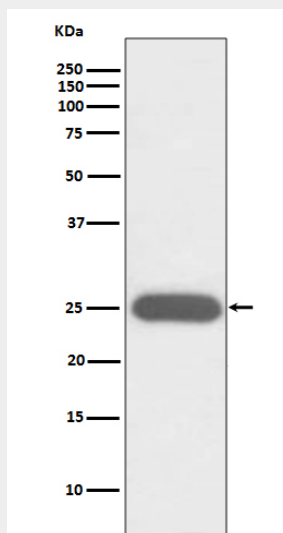
Cellular Location
Secreted.

G-CSF Antibody - Protocols

Provided below are standard protocols that you may find useful for product applications.

- [Western Blot](#)
- [Blocking Peptides](#)
- [Dot Blot](#)
- [Immunohistochemistry](#)
- [Immunofluorescence](#)
- [Immunoprecipitation](#)
- [Flow Cytometry](#)
- [Cell Culture](#)

G-CSF Antibody - Images



Western blot analysis of G-CSF expression in K562 cell lysate.