

**SFRP1 Antibody**  
**Rabbit mAb**  
**Catalog # AP91263****Specification**

---

**SFRP1 Antibody - Product Information**

Application	WB, IHC, ICC
Primary Accession	<a href="#">Q8N474</a>
Clonality	Monoclonal
<b>Other Names</b>	
Frizzled related protein 1; FRP1; FrzA; SARP2; Secreted apoptosis related protein 2; Secreted frizzled related protein 1; SFRP1;	
Isotype	Rabbit IgG
Host	Rabbit
Calculated MW	35386 Da

**SFRP1 Antibody - Additional Information**

Dilution	WB~~1:1000 IHC~~1:100~500 ICC~~N/A
Purification	Affinity-chromatography
Immunogen	A synthesized peptide derived from human SFRP1
Description	SFRP proteins appear to act as tumor suppressors, with loss of expression or function correlating with many invasive forms of cancer. Deletion of the corresponding SFRP1 gene and promoter hypermethylation leading to gene silencing has been reported in a number of cancers. Abnormal expression of SRFP1 and other Wnt signaling proteins is associated with some cases of retinitis pigmentosa.
Storage Condition and Buffer	Rabbit IgG in phosphate buffered saline , pH 7.4, 150mM NaCl, 0.02% sodium azide and 50% glycerol. Store at +4°C short term. Store at -20°C long term. Avoid freeze / thaw cycle.

**SFRP1 Antibody - Protein Information****Name** SFRP1**Synonyms** FRP, FRP1, SARP2**Function**

Soluble frizzled-related proteins (sFRPS) function as modulators of Wnt signaling through direct

interaction with Wnts. They have a role in regulating cell growth and differentiation in specific cell types. SFRP1 decreases intracellular beta-catenin levels (By similarity). Has antiproliferative effects on vascular cells, in vitro and in vivo, and can induce, in vivo, an angiogenic response. In vascular cell cycle, delays the G1 phase and entry into the S phase (By similarity). In kidney development, inhibits tubule formation and bud growth in metanephroi (By similarity). Inhibits WNT1/WNT4-mediated TCF- dependent transcription.

**Cellular Location**

Secreted. Note=Cell membrane or extracellular matrix-associated. Released by heparin-binding

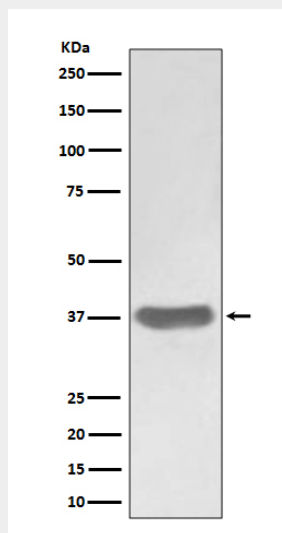
**Tissue Location**

Widely expressed. Absent from lung, liver and peripheral blood leukocytes. Highest levels in heart and fetal kidney Also expressed in testis, ovary, fetal brain and lung, leiomyomal cells, myometrial cells and vascular smooth muscle cells. Expressed in foreskin fibroblasts and in keratinocytes

**SFRP1 Antibody - Protocols**

Provided below are standard protocols that you may find useful for product applications.

- [Western Blot](#)
- [Blocking Peptides](#)
- [Dot Blot](#)
- [Immunohistochemistry](#)
- [Immunofluorescence](#)
- [Immunoprecipitation](#)
- [Flow Cytometry](#)
- [Cell Culture](#)

**SFRP1 Antibody - Images**

Western blot analysis of SFRP1 expression in A375 cell lysate.