

**Profilin1 Antibody**  
Rabbit mAb  
Catalog # AP91276

## Specification

---

### Profilin1 Antibody - Product Information

Application	WB, IHC, FC, ICC, IP
Primary Accession	<a href="#">P07737</a>
Reactivity	Rat
Clonality	Monoclonal
<b>Other Names</b>	
Actin binding protein; ALS18; Epididymis tissue protein Li 184a; PFN 1; Pfn; PFN1; Profilin1; Profilinl;	
Isotype	Rabbit IgG
Host	Rabbit
Calculated MW	15054 Da

### Profilin1 Antibody - Additional Information

Purification	Affinity-chromatography
Immunogen	A synthesized peptide derived from human Profilin1
Description	Binds to actin and affects the structure of the cytoskeleton. At high concentrations, profilin prevents the polymerization of actin, whereas it enhances it at low concentrations. By binding to PIP2, it inhibits the formation of IP3 and DG.
Storage Condition and Buffer	Rabbit IgG in phosphate buffered saline , pH 7.4, 150mM NaCl, 0.02% sodium azide and 50% glycerol. Store at +4°C short term. Store at -20°C long term. Avoid freeze / thaw cycle.

### Profilin1 Antibody - Protein Information

**Name** PFN1

#### Function

Binds to actin and affects the structure of the cytoskeleton. At high concentrations, profilin prevents the polymerization of actin, whereas it enhances it at low concentrations. By binding to PIP2, it inhibits the formation of IP3 and DG. Inhibits androgen receptor (AR) and HTT aggregation and binding of G-actin is essential for its inhibition of AR.

#### Cellular Location

Cytoplasm, cytoskeleton.

#### Tissue Location

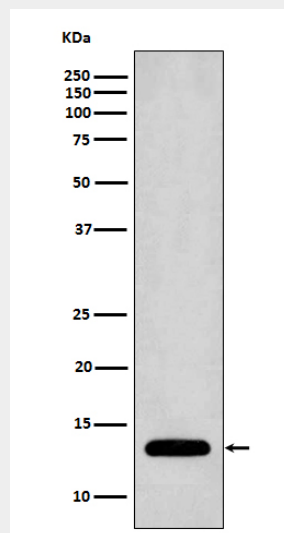
Expressed in epididymis (at protein level).

### Profilin1 Antibody - Protocols

Provided below are standard protocols that you may find useful for product applications.

- [Western Blot](#)
- [Blocking Peptides](#)
- [Dot Blot](#)
- [Immunohistochemistry](#)
- [Immunofluorescence](#)
- [Immunoprecipitation](#)
- [Flow Cytometry](#)
- [Cell Culture](#)

### Profilin1 Antibody - Images



Western blot analysis of Profilin1 expression in Jurkat cell lysate.