

**Phospho-POLR2A (S5) Antibody**  
**Rabbit mAb**  
**Catalog # AP91278**

**Specification**

**Phospho-POLR2A (S5) Antibody - Product Information**

Application	WB, IHC, FC, ICC, IP
Primary Accession	<a href="#">P24928</a>
Reactivity	Rat
Clonality	Monoclonal
<b>Other Names</b>	
POLR2A; POLR2; RNA polymerase II CTD repeat YSPTSPS;	
Isotype	Rabbit IgG
Host	Rabbit
Calculated MW	217176 Da

**Phospho-POLR2A (S5) Antibody - Additional Information**

Dilution	WB~~1:1000 IHC~~1:100~500 FC~~1:10~50 ICC~~N/A IP~~N/A
Purification	Affinity-chromatography
Immunogen	A synthesized peptide derived from human POLR2A
Description	Acts as an RNA-dependent RNA polymerase when associated with small delta antigen of Hepatitis delta virus, acting both as a replicate and transcriptase for the viral RNA circular genome.
Storage Condition and Buffer	Rabbit IgG in phosphate buffered saline , pH 7.4, 150mM NaCl, 0.02% sodium azide and 50% glycerol. Store at +4°C short term. Store at -20°C long term. Avoid freeze / thaw cycle.

**Phospho-POLR2A (S5) Antibody - Protein Information**

**Name** POLR2A ([HGNC:9187](#))

**Synonyms** POLR2

**Function**

Catalytic core component of RNA polymerase II (Pol II), a DNA-dependent RNA polymerase which synthesizes mRNA precursors and many functional non-coding RNAs using the four ribonucleoside triphosphates as substrates (By similarity) (PubMed:<a href="http://www.uniprot.org/citations/23748380" target="\_blank">23748380</a>, PubMed:<a href="http://www.uniprot.org/citations/23748380" target="\_blank">23748380</a>)

href="http://www.uniprot.org/citations/27193682" target="\_blank">27193682</a>, PubMed:<a href="http://www.uniprot.org/citations/30190596" target="\_blank">30190596</a>, PubMed:<a href="http://www.uniprot.org/citations/9852112" target="\_blank">9852112</a>). Pol II-mediated transcription cycle proceeds through transcription initiation, transcription elongation and transcription termination stages. During transcription initiation, Pol II pre-initiation complex (PIC) is recruited to DNA promoters, with focused-type promoters containing either the initiator (Inr) element, or the TATA-box found in cell-type specific genes and dispersed-type promoters that often contain hypomethylated CpG islands usually found in housekeeping genes. Once the polymerase has escaped from the promoter it enters the elongation phase during which RNA is actively polymerized, based on complementarity with the template DNA strand. Transcription termination involves the release of the RNA transcript and polymerase from the DNA (By similarity) (PubMed:<a href="http://www.uniprot.org/citations/23748380" target="\_blank">23748380</a>, PubMed:<a href="http://www.uniprot.org/citations/27193682" target="\_blank">27193682</a>, PubMed:<a href="http://www.uniprot.org/citations/28108474" target="\_blank">28108474</a>, PubMed:<a href="http://www.uniprot.org/citations/30190596" target="\_blank">30190596</a>, PubMed:<a href="http://www.uniprot.org/citations/9852112" target="\_blank">9852112</a>). Forms Pol II active center together with the second largest subunit POLR2B/RPB2. Appends one nucleotide at a time to the 3' end of the nascent RNA, with POLR2A/RPB1 most likely contributing a Mg(2+)-coordinating DxDGD motif, and POLR2B/RPB2 participating in the coordination of a second Mg(2+) ion and providing lysine residues believed to facilitate Watson-Crick base pairing between the incoming nucleotide and template base. Typically, Mg(2+) ions direct a 5' nucleoside triphosphate to form a phosphodiester bond with the 3' hydroxyl of the preceding nucleotide of the nascent RNA, with the elimination of pyrophosphate. The reversible pyrophosphorolysis can occur at high pyrophosphate concentrations (By similarity) (PubMed:<a href="http://www.uniprot.org/citations/30190596" target="\_blank">30190596</a>, PubMed:<a href="http://www.uniprot.org/citations/8381534" target="\_blank">8381534</a>, PubMed:<a href="http://www.uniprot.org/citations/9852112" target="\_blank">9852112</a>). Can proofread the nascent RNA transcript by means of a 3' -> 5' exonuclease activity. If a ribonucleotide is mis-incorporated, backtracks along the template DNA and cleaves the phosphodiester bond releasing the mis-incorporated 5'-ribonucleotide (By similarity) (PubMed:<a href="http://www.uniprot.org/citations/8381534" target="\_blank">8381534</a>). Through its unique C-terminal domain (CTD, 52 heptapeptide tandem repeats) serves as a platform for assembly of factors that regulate transcription initiation, elongation and termination. CTD phosphorylation on Ser-5 mediates Pol II promoter escape, whereas phosphorylation on Ser-2 is required for Pol II pause release during transcription elongation and further pre-mRNA processing. Additionally, the regulation of gene expression levels depends on the balance between methylation and acetylation levels of the CTD-lysines. Initiation or early elongation steps of transcription of growth-factor-induced immediate early genes are regulated by the acetylation status of the CTD. Methylation and dimethylation have a repressive effect on target genes expression. Cooperates with mRNA splicing machinery in co-transcriptional 5'-end capping and co-transcriptional splicing of pre-mRNA (By similarity) (PubMed:<a href="http://www.uniprot.org/citations/24207025" target="\_blank">24207025</a>, PubMed:<a href="http://www.uniprot.org/citations/26124092" target="\_blank">26124092</a>).

### Cellular Location

Nucleus. Cytoplasm. Chromosome. Note=Hypophosphorylated form is mainly found in the cytoplasm, while the hyperphosphorylated and active form is nuclear (PubMed:26566685). Co-localizes with kinase SRPK2 and helicase DDX23 at chromatin loci where unscheduled R-loops form (PubMed:28076779).

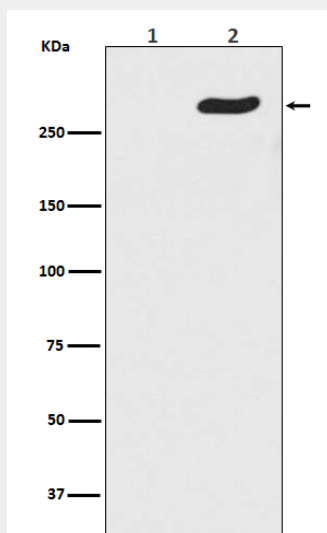
### Phospho-POLR2A (S5) Antibody - Protocols

Provided below are standard protocols that you may find useful for product applications.

- [Western Blot](#)

- [Blocking Peptides](#)
- [Dot Blot](#)
- [Immunohistochemistry](#)
- [Immunofluorescence](#)
- [Immunoprecipitation](#)
- [Flow Cytometry](#)
- [Cell Culture](#)

#### Phospho-POLR2A (S5) Antibody - Images



Western blot analysis of Phospho-POLR2A (S5) expression in (1) HeLa cell lysate treated with Lambda Phosphatase; (2) HeLa cell lysate.