

**LOX Antibody (Center)**  
**Affinity Purified Rabbit Polyclonal Antibody (Pab)**  
**Catalog # AP9127c****Specification**

---

**LOX Antibody (Center) - Product Information**

Application	FC, WB,E
Primary Accession	<a href="#">P28300</a>
Other Accession	<a href="#">P16636</a> , <a href="#">P45845</a> , <a href="#">P28301</a>
Reactivity	Human
Predicted	Mouse, Pig, Rat
Host	Rabbit
Clonality	Polyclonal
Isotype	Rabbit IgG
Calculated MW	46944
Antigen Region	234-260

**LOX Antibody (Center) - Additional Information****Gene ID** 4015**Other Names**

Protein-lysine 6-oxidase, Lysyl oxidase, LOX

**Target/Specificity**

This LOX antibody is generated from rabbits immunized with a KLH conjugated synthetic peptide between 234-260 amino acids from the Central region of human LOX.

**Dilution**

FC~~1:10~50

WB~~1:1000

E~~Use at an assay dependent concentration.

**Format**

Purified polyclonal antibody supplied in PBS with 0.09% (W/V) sodium azide. This antibody is purified through a protein A column, followed by peptide affinity purification.

**Storage**

Maintain refrigerated at 2-8°C for up to 2 weeks. For long term storage store at -20°C in small aliquots to prevent freeze-thaw cycles.

**Precautions**

LOX Antibody (Center) is for research use only and not for use in diagnostic or therapeutic procedures.

**LOX Antibody (Center) - Protein Information****Name** LOX

**Function** Responsible for the post-translational oxidative deamination of peptidyl lysine residues in precursors to fibrous collagen and elastin (PubMed:[26838787](#)). Regulator of Ras expression. May play a role in tumor suppression. Plays a role in the aortic wall architecture (By similarity).

**Cellular Location**

Secreted. Secreted, extracellular space

**Tissue Location**

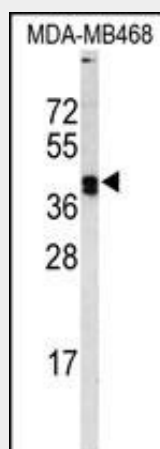
Heart, placenta, skeletal muscle, kidney, lung and pancreas.

**LOX Antibody (Center) - Protocols**

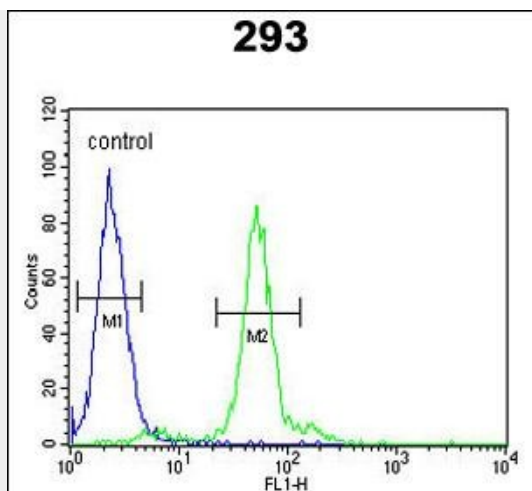
Provided below are standard protocols that you may find useful for product applications.

- [Western Blot](#)
- [Blocking Peptides](#)
- [Dot Blot](#)
- [Immunohistochemistry](#)
- [Immunofluorescence](#)
- [Immunoprecipitation](#)
- [Flow Cytometry](#)
- [Cell Culture](#)

**LOX Antibody (Center) - Images**



Western blot analysis of LOX Antibody (Center) (Cat. #AP9127c) in MDA-MB468 cell line lysates (35ug/lane). LOX (arrow) was detected using the purified Pab.



LOX Antibody (Center) (Cat. #AP9127c) flow cytometric analysis of 293 cells (right histogram) compared to a negative control cell (left histogram). FITC-conjugated goat-anti-rabbit secondary antibodies were used for the analysis.

#### **LOX Antibody (Center) - Background**

LOX is an extracellular copper enzyme that initiates the crosslinking of collagens and elastin. The enzyme catalyzes oxidative deamination of the epsilon-amino group in certain lysine and hydroxylysine residues of collagens and lysine residues of elastin. In addition to crosslinking extracellular matrix proteins, the encoded protein may have a role in tumor suppression.

#### **LOX Antibody (Center) - References**

Mariani, T.J., et.al., Matrix 12 (3), 242-248 (1992)