

**Drebrin Antibody**  
**Rabbit mAb**  
**Catalog # AP91287**

## Specification

### Drebrin Antibody - Product Information

Application	WB, ICC, IP
Primary Accession	<a href="#">Q16643</a>
Reactivity	Rat
Clonality	Monoclonal
<b>Other Names</b>	
D0S117E; DBN1; Drebrin 1; Drebrin; Drebrin E2; Drebrin1; DrebrinE;	
Isotype	Rabbit IgG
Host	Rabbit
Calculated MW	71429 Da

### Drebrin Antibody - Additional Information

Dilution	WB~~1:1000 ICC~~N/A IP~~N/A
Purification	Affinity-chromatography
Immunogen	A synthesized peptide derived from human Drebrin
Description	Drebrins might play some role in cell migration, extension of neuronal processes and plasticity of dendrites, respectively.
Storage Condition and Buffer	Rabbit IgG in phosphate buffered saline , pH 7.4, 150mM NaCl, 0.02% sodium azide and 50% glycerol. Store at +4°C short term. Store at -20°C long term. Avoid freeze / thaw cycle.

### Drebrin Antibody - Protein Information

**Name** DBN1

**Synonyms** D0S117E

#### Function

Actin cytoskeleton-organizing protein that plays a role in the formation of cell projections (PubMed:<a href="http://www.uniprot.org/citations/20215400" target="\_blank">20215400</a>). Required for actin polymerization at immunological synapses (IS) and for the recruitment of the chemokine receptor CXCR4 to IS (PubMed:<a href="http://www.uniprot.org/citations/20215400" target="\_blank">20215400</a>). Plays a role in dendritic spine morphogenesis and organization, including the localization of the dopamine receptor DRD1 to the dendritic spines (By similarity). Involved in memory-related synaptic plasticity in the hippocampus (By similarity).

### Cellular Location

Cytoplasm. Cell projection, dendrite. Cytoplasm, cell cortex. Cell junction. Cell projection, growth cone {ECO:0000250|UniProtKB:Q9QXS6}. Note=In the absence of antigen, evenly distributed throughout subcortical regions of the T-cell membrane and cytoplasm (PubMed:20215400). In the presence of antigen, distributes to the immunological synapse forming at the T-cell-APC contact area, where it localizes at the peripheral and distal supramolecular activation clusters (SMAC) (PubMed:20215400). Colocalized with RUFY3 and F-actin at the transitional domain of the axonal growth cone (By similarity) {ECO:0000250|UniProtKB:Q9QXS6, ECO:0000269|PubMed:20215400}

### Tissue Location

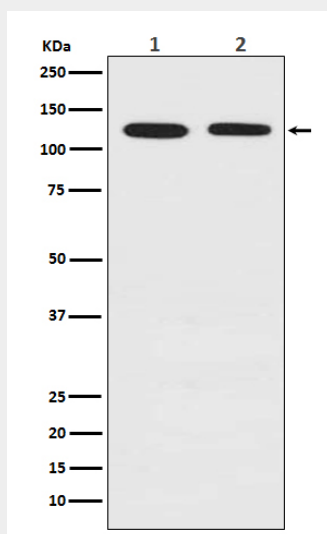
Expressed in the brain, with expression in the molecular layer of the dentate gyrus, stratum pyramidale, and stratum radiatum of the hippocampus (at protein level) (PubMed:8838578). Also expressed in the terminal varicosities distributed along dendritic trees of pyramidal cells in CA4 and CA3 of the hippocampus (at protein level) (PubMed:8838578). Expressed in pyramidal cells in CA2, CA1 and the subiculum of the hippocampus (at protein level) (PubMed:8838578) Expressed in peripheral blood lymphocytes, including T-cells (at protein level) (PubMed:20215400). Expressed in the brain (PubMed:8216329, Ref.2). Expressed in the heart, placenta, lung, skeletal muscle, kidney, pancreas, skin fibroblasts, gingival fibroblasts and bone-derived cells (Ref.2) {ECO:0000269|PubMed:20215400, ECO:0000269|PubMed:8216329, ECO:0000269|PubMed:8838578, ECO:0000269|Ref.2}

### Drebrin Antibody - Protocols

Provided below are standard protocols that you may find useful for product applications.

- [Western Blot](#)
- [Blocking Peptides](#)
- [Dot Blot](#)
- [Immunohistochemistry](#)
- [Immunofluorescence](#)
- [Immunoprecipitation](#)
- [Flow Cytometry](#)
- [Cell Culture](#)

### Drebrin Antibody - Images



Western blot analysis of Drebrin expression in (1) HeLa cell lysate; (2) PC-12 cell lysate.