

**LXR alpha Antibody**  
**Rabbit mAb**  
**Catalog # AP91296****Specification**

---

**LXR alpha Antibody - Product Information**

Application	WB, FC, ICC
Primary Accession	<a href="#">Q13133</a>
Reactivity	Rat
Clonality	Monoclonal

**Other Names**

Liver X receptor alpha; LXR a; LXRA; NR1H3; RLD1;

Isotype	Rabbit IgG
Host	Rabbit
Calculated MW	50396 Da

**LXR alpha Antibody - Additional Information**

Dilution	WB~~1:1000 FC~~1:10~50 ICC~~N/A
Purification	Affinity-chromatography
Immunogen	A synthesized peptide derived from human LXR alpha
Description	Orphan receptor. Interaction with RXR shifts RXR from its role as a silent DNA-binding partner to an active ligand-binding subunit in mediating retinoid responses through target genes defined by LXRES. LXRES are DR4-type response elements characterized by direct repeats of two similar hexanucleotide half-sites spaced by four nucleotides. Plays an important role in the regulation of cholesterol homeostasis, regulating cholesterol uptake through MYLIP-dependent ubiquitination of LDLR, VLDLR and LRP8.
Storage Condition and Buffer	Rabbit IgG in phosphate buffered saline , pH 7.4, 150mM NaCl, 0.02% sodium azide and 50% glycerol. Store at +4°C short term. Store at -20°C long term. Avoid freeze / thaw cycle.

**LXR alpha Antibody - Protein Information****Name** NR1H3

## Synonyms LXRA

### Function

Nuclear receptor that exhibits a ligand-dependent transcriptional activation activity (PubMed:<a href="http://www.uniprot.org/citations/19481530" target="\_blank">19481530</a>, PubMed:<a href="http://www.uniprot.org/citations/25661920" target="\_blank">25661920</a>, PubMed:<a href="http://www.uniprot.org/citations/37478846" target="\_blank">37478846</a>). Interaction with retinoic acid receptor (RXR) shifts RXR from its role as a silent DNA-binding partner to an active ligand-binding subunit in mediating retinoid responses through target genes defined by LXRES (PubMed:<a href="http://www.uniprot.org/citations/37478846" target="\_blank">37478846</a>). LXRES are DR4-type response elements characterized by direct repeats of two similar hexanucleotide half-sites spaced by four nucleotides (By similarity). Plays an important role in the regulation of cholesterol homeostasis, regulating cholesterol uptake through MYLIP-dependent ubiquitination of LDLR, VLDLR and LRP8 (PubMed:<a href="http://www.uniprot.org/citations/19481530" target="\_blank">19481530</a>). Interplays functionally with RORA for the regulation of genes involved in liver metabolism (By similarity). Induces LPCAT3-dependent phospholipid remodeling in endoplasmic reticulum (ER) membranes of hepatocytes, driving SREBF1 processing and lipogenesis (By similarity). Via LPCAT3, triggers the incorporation of arachidonate into phosphatidylcholines of ER membranes, increasing membrane dynamics and enabling triacylglycerols transfer to nascent very low-density lipoprotein (VLDL) particles. Via LPCAT3 also counteracts lipid-induced ER stress response and inflammation, likely by modulating SRC kinase membrane compartmentalization and limiting the synthesis of lipid inflammatory mediators (By similarity).

### Cellular Location

Nucleus {ECO:0000255|PROSITE-ProRule:PRU00407, ECO:0000269|PubMed:25661920}.  
Cytoplasm {ECO:0000250|UniProtKB:Q9Z0Y9}

### Tissue Location

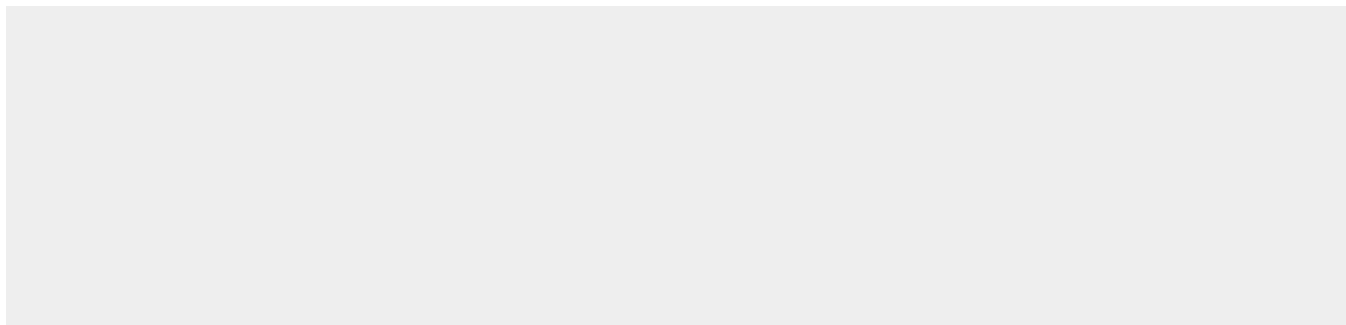
Visceral organs specific expression. Strong expression was found in liver, kidney and intestine followed by spleen and to a lesser extent the adrenals

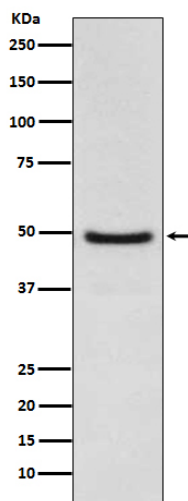
## LXR alpha Antibody - Protocols

Provided below are standard protocols that you may find useful for product applications.

- [Western Blot](#)
- [Blocking Peptides](#)
- [Dot Blot](#)
- [Immunohistochemistry](#)
- [Immunofluorescence](#)
- [Immunoprecipitation](#)
- [Flow Cytometry](#)
- [Cell Culture](#)

## LXR alpha Antibody - Images





Western blot analysis of LXR alpha expression in Jurkat cell lysate.