

**hnRNP A1 Antibody**  
**Rabbit mAb**  
**Catalog # AP91297****Specification**

---

**hnRNP A1 Antibody - Product Information**

Application	WB, IHC, FC, ICC
Primary Accession	<a href="#">P09651</a>
Reactivity	Rat
Clonality	Monoclonal
<b>Other Names</b>	
HNRNPA 1; HNRNPA1; HNRPA1;	

Isotype	Rabbit IgG
Host	Rabbit
Calculated MW	38747 Da

**hnRNP A1 Antibody - Additional Information**

Dilution	WB~~1:1000 IHC~~1:100~500 FC~~1:10~50 ICC~~N/A
Purification	Affinity-chromatography
Immunogen	A synthesized peptide derived from human hnRNP A1
Description	hnRNP A1 regulates the alternative splicing of c-Src and c-H-Ras and modifies initiation of translation of the fibroblast growth factor 2 mRNA. hnRNP A1 expression level is elevated in many cancers; knockdown of hnRNP A1 leads to apoptosis in various cancer cells. Although predominantly nuclear, hnRNP A1 is continually transported from the nucleus to the cytoplasm where it disassociates from mRNA and is rapidly re-imported into the nucleus.
Storage Condition and Buffer	Rabbit IgG in phosphate buffered saline , pH 7.4, 150mM NaCl, 0.02% sodium azide and 50% glycerol. Store at +4°C short term. Store at -20°C long term. Avoid freeze / thaw cycle.

**hnRNP A1 Antibody - Protein Information****Name** HNRNPA1**Synonyms** HNRPA1

### Function

Involved in the packaging of pre-mRNA into hnRNP particles, transport of poly(A) mRNA from the nucleus to the cytoplasm and modulation of splice site selection (PubMed:<a href="http://www.uniprot.org/citations/17371836" target="\_blank">17371836</a>). Plays a role in the splicing of pyruvate kinase PKM by binding repressively to sequences flanking PKM exon 9, inhibiting exon 9 inclusion and resulting in exon 10 inclusion and production of the PKM M2 isoform (PubMed:<a href="http://www.uniprot.org/citations/20010808" target="\_blank">20010808</a>). Binds to the IRES and thereby inhibits the translation of the apoptosis protease activating factor APAF1 (PubMed:<a href="http://www.uniprot.org/citations/31498791" target="\_blank">31498791</a>). May bind to specific miRNA hairpins (PubMed:<a href="http://www.uniprot.org/citations/28431233" target="\_blank">28431233</a>).

### Cellular Location

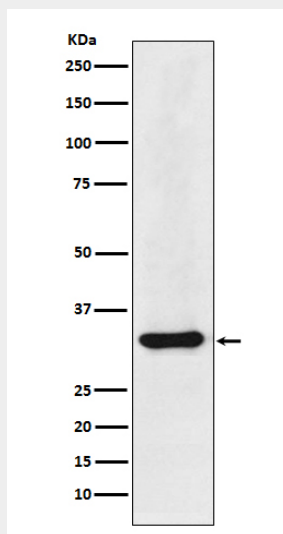
Nucleus. Cytoplasm Note=Localized in cytoplasmic mRNP granules containing untranslated mRNAs. Shuttles continuously between the nucleus and the cytoplasm along with mRNA. Component of ribonucleosomes (PubMed:17289661) Nucleus. Note=(Microbial infection) SARS coronavirus-2/SARS-CoV-2 ORF6 protein increases accumulation to the nucleus.

### hnRNP A1 Antibody - Protocols

Provided below are standard protocols that you may find useful for product applications.

- [Western Blot](#)
- [Blocking Peptides](#)
- [Dot Blot](#)
- [Immunohistochemistry](#)
- [Immunofluorescence](#)
- [Immunoprecipitation](#)
- [Flow Cytometry](#)
- [Cell Culture](#)

### hnRNP A1 Antibody - Images



Western blot analysis of hnRNP A1 expression in HepG2 cell lysate.